

**SYLVANIA**

90  
YEARS OF LIGHT  
1924 – 2014

**SYLVANIA**

**EUROPE**

**Head Office**

**London**

info.eu@havells-sylvania.com

**Austria**

Vienna

T. +43 (0)1617 4480

F. +43 (0)1617 4481

info.at@havells-sylvania.com

**Belgium**

Antwerp

T. +32 (0)3 610 44 44

F. +32 (0)3 610 44 57

info.be@havells-sylvania.com

**Czech Republic, Slovakia,  
Slovenia and Croatia**

Erlangen

T. +49 9131 793 143

F. +49 9131 793 468

info.cz@havells-sylvania.com

**Estonia, Latvia, Lithuania**

Tallinn

T. +372 530 577 95

F. +372 530 704 69

info.bal@havells-sylvania.com

**Finland**

Helsinki

T. +358 (0)9 5421 2100

F. +358 (0)9 5421 2130

info.fi@havells-sylvania.com

**France**

Paris

T. +33 (0)1 55 51 11 00

F. +33 (0)1 55 51 11 15

info.fr@havells-sylvania.com

**Germany**

Frankfurt

T. +49 (0)69795 88850

F. +49 (0)69795 888531

info.de@havells-sylvania.com

**Greece**

Athens

T. +30 210 996 65 61

F. +30 210 996 90 29

info.gr@havells-sylvania.com

**Hungary**

Budapest

T. +36 (30) 50 69 182

F. +36 (24) 423 563

info.hu@havells-sylvania.com

**Italy**

Milan

T. +39 02 24 12 58 11

F. +39 02 24 12 58 80

info.it@havells-sylvania.com

**Netherlands**

Breda

T. +31 (0)76 750 44 44

F. +31 (0)76 750 44 56

info.nl@havells-sylvania.com

**Norway**

Oslo

T. +47 23 067470

F. +47 23 067471

info.no@havells-sylvania.com

**Poland**

Warsaw

T. +48 22 811 60 32

F. +48 22 811 60 33

info.pl@havells-sylvania.com

**Portugal**

Lisbon

T. +351 21 793 77 36/37

F. +351 21 793 77 38

info.pt@havells-sylvania.com

**Romania / Bulgaria**

Bucharest

T. +40 (0) 720 724 647

info.ro@havells-sylvania.com

**Russia**

Moscow

T. +7 495 935 70 48

F. +7 495 937 70 08

info.ru@havells-sylvania.com

**Spain**

Madrid

T. +34 91 669 90 00

F. +34 91 673 73 64

info.es@havells-sylvania.com

**Sweden**

Stockholm

T. +46 8 556 322 00

F. +46 8 556 322 10

info.se@havells-sylvania.com

**Switzerland**

Zurich

T. +41 44305 31 80

F. +41 44305 31 81

info.ch@havells-sylvania.com

**Turkey**

Istanbul

T. +90 216 594 54 70

F. +90 216 594 54 72

info.tr@havells-sylvania.com

**UK**

Newhaven

T. +44 870 606 2030

F. +44 1273 512 688

info.uk@havells-sylvania.com

**MIDDLE EAST**

**United Arab Emirates**

Dubai

T. +971 4 2998141

F. +971 4 2998142

info.ae@havells-sylvania.com

**ASIA**

**China**

Guangzhou

T. +86 20 3815 1138

F. +86 20 3869 7572

info.cn@havells-sylvania.com

**India**

Noida

T. +91 120 477 1000

F. +91 120 477 2000

marketing@havells.com

**Malaysia**

Kuala Lumpur

T. +603 2031 8788

F. +603 2031 4788

info.my@havells-sylvania.com

**Thailand**

Bangkok

T. +66 2656 9039

F. +66 2254 3369

info.th@havells-sylvania.com

**Vietnam**

Hanoi

T. +844 37 151 604

F. +844 37 151 605

info.vn@havells-sylvania.com

**AMERICAS**

**Argentina, Paraguay, Uruguay**

Buenos Aires

T. +54 11 4546 4200

F. +54 11 4546 4228

info.ar@havells-sylvania.com

**Brazil**

São Paulo

T. +55 11 3133 2400

F. +55 11 5521 3660

info.br@havells-sylvania.com

**Caribbean**

**Honduras, Nicaragua**

San José

T. +506 22 107 678

F. +506 22 328 723

info.cr@havells-sylvania.com

**Chile**

Santiago

T. +56 2 365 1767

F. +56 2 365 1772

info.cl@havells-sylvania.com

**Colombia**

Santafé de Bogota

T. +57 1 782 5200

F. +57 1 719 9621

info.co@havells-sylvania.com

**Costa Rica**

San José

T. +506 22 107 678

F. +506 22 200 338

sales@havells-sylvania.com

**Ecuador**

Quito

T. +593 2 328 4407

F. +593 2 281 0007

info.ec@havells-sylvania.com

**El Salvador**

San Salvador

T. +503 2239 2239

F. +503 2284 9670

info.sv@havells-sylvania.com

**Guatemala**

Guatemala City

T. +502 2387 5300

F. +502 2387 5301

info.gt@havells-sylvania.com

**Mexico**

Mexico D.F.

T. +52 55 5387 7670

F. +52 55 5387 7671

info.mx@havells-sli.com

**Panama**

Panama City

T. +507 236 1000

F. +507 236 1315

info.pa@havells-sylvania.com

**USA**

Atlanta, GA

T. +1 678 420 3700

F. +1 404 349 2434

www.havells-usa.com

**Venezuela**

Caracas

T. +58 212 381 0452

F. +58 212 381 0350

info.ve@havells-sylvania.com

Although every effort has been made to ensure accuracy in the compilation of the technical detail within this publication, specifications and performance data are constantly changing. Current details should therefore be checked with Havells Sylvania Europe Ltd.

CAT6305 Havells Sylvania copyright 2013

www.havells-sylvania.com

**SYLVANIA**

Photo Optic  
Discharge Lamps

2014

**SYLVANIA**



About Us

Havells Sylvania

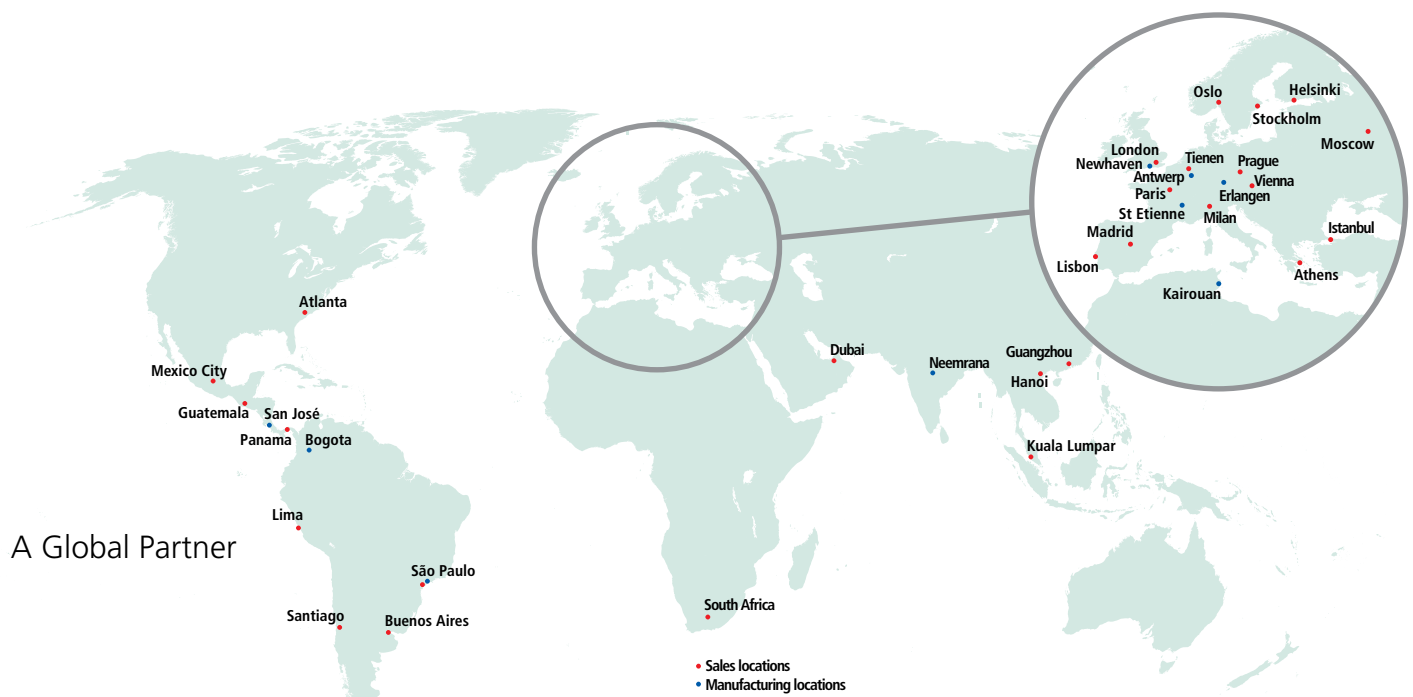


We are Havells Sylvania, one of the world’s major lighting groups. For decades we have improved the way people live by enabling them to enjoy better lighting in a more sustainable manner. Today, we continue to build on our exceptional reputation as an innovator and creator of high-efficiency, energy-saving, light sources and luminaires, by providing full spectrum lighting solutions tailored to your individual and local needs.

Our three main brands: Concord, Lumiance and Sylvania – concentrate strengths in research and development, LED lighting technology, product design, engineering and production, plus in-depth, honest application expertise, on their specialised areas of activity: high-end architectural, decorative and functional professional lighting.

Havells Sylvania is part of Havells India Ltd which gives us the financial strength and resources to significantly expand and improve the business. The group, which has 94 branches and representative offices and 8,000 staff in more than 50 countries, has grown rapidly to become a US \$1.3 billion company and currently operates 18 manufacturing plants in India, Europe, Latin America and Africa, producing globally acclaimed products such as switchgear, cables, wires and lighting. In Australia, Canada, Mexico, New Zealand, Puerto Rico and the USA the brand name is with different owners.

Lamps	Luminaires		
<a href="http://www.sylvania-lamps.com">www.sylvania-lamps.com</a>	<a href="http://www.concord-lighting.com">www.concord-lighting.com</a>	<a href="http://www.lumiance-lighting.com">www.lumiance-lighting.com</a>	<a href="http://www.sylvania-luminaires.com">www.sylvania-luminaires.com</a>
<b>Without Compromise</b> The heritage and broad spectrum of products makes Sylvania lamps one of the most respected lighting brands in the world. It has manufacturing and research centres across the globe.	<b>Elegant Innovation</b> One of Europe's premium architectural lighting brands with an emphasis on technical performance and aesthetic form. Concord focuses on meeting the needs of architects and lighting designers.	<b>Beautifully Functional</b> Lumiance offers a wide range of contemporary designed luminaires, intended for a variety of applications such as shops, offices, hotels and restaurants.	<b>Without Compromise</b> Sylvania offers a comprehensive portfolio of attractive and competitively priced luminaires for industrial and commercial applications.







# BriteArc Single Ended Non Hot Restrike



BA 575 SE NHR



BA 1200 SE NHR

BriteArc Single Ended Non Hot Restrike lamps are compact light sources with excellent performance, specially designed for a wide variety of audiovisual applications. The BriteArc lamps are filled with mercury and rare earth elements to obtain a high efficacy and a stable colour with a very good rendering index. They can be re-struck after 10 minutes. These lamps can be operated in any position.

Features

- High luminous efficacy
- Low infrared
- Colour stability
- Excellent lumen maintenance
- Physical ruggedness

Applications

- Show lighting
- Theatre
- Discotheque lighting
- Follow spots
- Effect lighting
- Architectural

Directions for use

- Burning position: universal
- Restrike after 10 minutes
- Only use in closed fixtures
- Can be operated on an electronic power supply or on a magnetic ballast

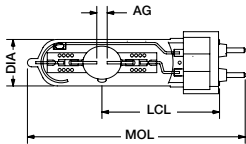


Fig. 1

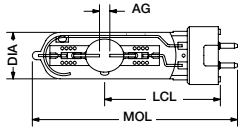


Fig. 2

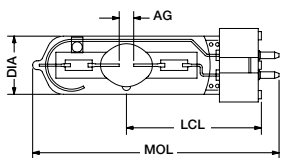


Fig. 3

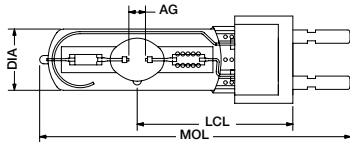


Fig. 4

Dimensions (mm)

Item description	Watt	Voltage	Current	Ignition Pulse	Average Life	Replacement Time	Luminous Flux	Colour Temp.	CRI	Total UV-output
	W	V	A	kV	hrs	hrs	lm	K		W
<b>BA SE NHR</b>										
BA 150 SE NHR	150	95	1.80	1.9	1000	1500	12400	5600	90	15
BA 400 SE NHR	400	67	6.90	2.2	650	750	33000	6200	92	40
BA 575 SE NHR	575	95	6.95	2.2	750	1000	49000	5600	90	60
BA 700 SE NHR	700	72	11.00	3.4	1000	1200	56000	5600	95	70
BA 1200 SE NHR	1200	100	13.80	2.5	750	1000	110000	6000	95	100
<b>BA SE D (Long Life)</b>										
BA 70 SE T DAYLIGHT	70	108	0.98	3.5	8000	10000	5500	6000	80	UV-STOP
BA 150 SE T DAYLIGHT	150	95	1.80	3.0	7000	9000	10000	6000	90	UV-STOP
BA 250 SE T DAYLIGHT	250	95	3.00	1.9	1250	1000	18000	5900	80	UV-STOP
BA 200 SE D	200	70	3.30	1.9	3000	3500	14000	5600	70	15
BA 250 SE D	250	95	3.00	1.9	3000	3500	18800	5800	80	18
BA 575 SE D	575	95	6.95	2.2	2000	2500	49000	5600	90	60

Item description	Cap	Dimensions		Dia	LCL	Max. bulb Temp.	Max. pinch Temp.	Figure Nr.	Packing Quantity	Ordering Code
		MOL mm	AG mm	mm	mm	°C	°C			
<b>BA SE NHR</b>										
BA 150 SE NHR	GY9.5	80	5	17	37	700	350	2	10	0023987
BA 400 SE NHR	GX9.5	112	6	23	62	700	350	3	10	0023958
BA 575 SE NHR	GX9.5	125	7	30	65	700	350	3	10	0023960
BA 700 SE NHR	G22	155	8	30	75	700	350	4	10	0023961
BA 1200 SE NHR	G22	175	10	40	85	700	350	4	10	0023935
<b>BA SE D (Long Life)</b>										
BA 70 SE T DAYLIGHT	G12	108	9	20	56	500	350	1	10	0023982
BA 150 SE T DAYLIGHT	G12	108	11	23	56	500	350	1	10	0023978
BA 250 SE T DAYLIGHT	G12	108	5	23	56	500	350	1	10	0023814
BA 200 SE D	GY9.5	108	5	23	55	500	350	2	10	7220168
BA 250 SE D	GY9.5	108	5	23	55	500	350	2	10	7220169
BA 575 SE D	GX9.5	125	7	30	65	600	350	3	10	0023981

Nominal values measured at rated wattage in horizontal position.

BriteArc Single Ended High Colour Temperature (Ba/2 Se)



BA 575 SE NHR



BA 1200 SE NHR

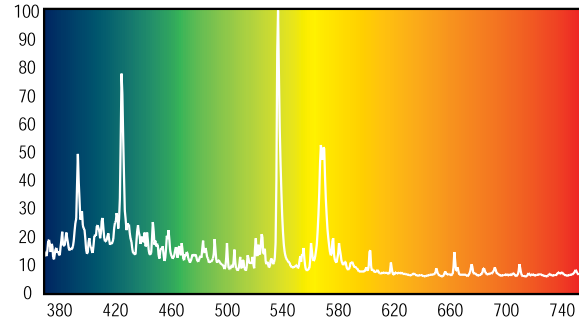
BriteArc Single Ended/2 lamps are compact light sources with a very high colour temperature offering stable crisp bright light during the complete lamp life. They can be re-struck after about 10 minutes. These lamps can be operated in any position.

Features

- Crisp bright light
- High luminous efficacy
- Low infrared
- Colour stability
- Excellent lumen maintenance
- Physical ruggedness applications
- Show lighting
- Theatre
- Discotheque lighting
- Effect lighting

Directions for use

- Burning position: universal
- Restrike after 10 minutes
- Only use in closed fixtures
- Can be operated on an electronic power supply or on a magnetic ballast



RA/2 8500 K

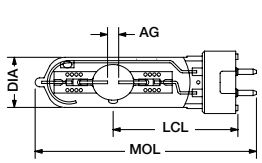


Fig. 1

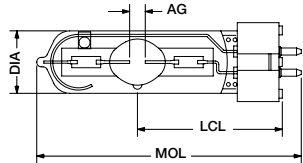


Fig. 2

Dimensions (mm)

Item description	Watt	Voltage	Current	Ignition Pulse	Average Life	Replacement Time	Luminous Flux	Colour Temp.	CRI	Total UV-output
	W	V	A	kV	hrs	hrs	lm	K		W
BA 250/2 SE D 8500	250	95	3.00	1.9	3000	3500	18000	8500	65	30
BA 575/2 SE NHR 7200	575	95	6.95	2.2	1000	1200	45000	7200	85	65
BA 575/2 SE NHR 8500	575	95	6.95	2.2	1000	1200	44000	8500	80	65

Item description	Cap	Dimensions				Max. bulb Temp.	Max. pinch Temp.	Figure Nr.	Packing Quantity	Ordering Code
		MOL	AG	Dia	LCL					
		mm	mm	mm	mm	C°	C°			
BA 250/2 SE D 8500	GY9.5	108	5	23	55	500	350	1	10	0023998
BA 575/2 SE NHR 7200	GX9.5	125	7	30	65	700	350	2	10	0024002
BA 575/2 SE NHR 8500	GX9.5	125	7	30	65	700	350	2	10	0024000

Nominal values measured at rated wattage in horizontal position.



BriteArc Single Ended Hot Restrike (Ba Se Hr)



BA200 SE HR Full Frost



BA 575 SE HR



BA 1200 SE HR

Features

- High luminous efficacy
- Low infrared
- Colour stability
- Excellent lumen maintenance
- Physical ruggedness
- Hot restrike

Applications

- TV-Studio lighting
- Photo studios
- Show lighting
- Theatre
- Follow spots

Directions for use

- Burning position: universal
- Only use in closed fixtures
- Can be operated on an electronic power supply or on a magnetic ballast

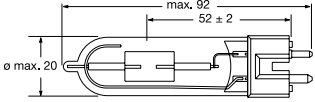
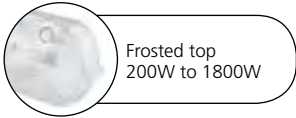


Fig. 1

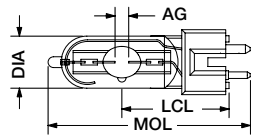


Fig. 2

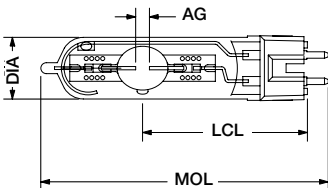


Fig. 3

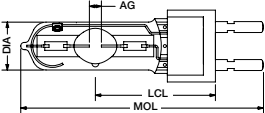


Fig. 4

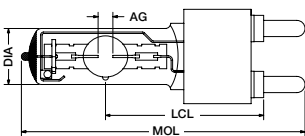


Fig. 5

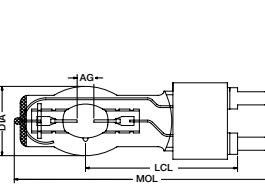


Fig. 6

Item description	Watt	Voltage	Current	Ignition Pulse	Average Life	Replacement Time	Luminous Flux	Colour Temp.	CRI	Total UV-output
	W	V	A	kV	hrs	hrs	lm	K		W
BA 200 SE HR LCL 3200K	200	70	2.7	25.0	1000	1500	19000	3200	88	UV-STOP
BA 200 SE HR LCL DAYLIGHT	200	70	3.3	25.0	200	450	15000	5600	95	UV-STOP
BA 200 SE HR DAYLIGHT	200	70	3.3	25.0	200	450	15000	5600	95	UV-STOP
BA 200 SE HR DAYLIGHT FULL FROSTED	200	70	3.3	25.0	200	450	15000	5600	95	UV-STOP
BA 400 SE HR DAYLIGHT	400	67	6.9	25.0	650	750	33000	6200	92	UV-STOP
BA 400 SE HR 3200K	400	67	6.9	25.0	650	750	33000	3200	92	UV-STOP
BA 400 SE HR DAYLIGHT FULL FROSTED	400	67	6.9	25.0	650	750	33000	6200	92	UV-STOP
BA 575 SE HR DAYLIGHT	575	95	6.9	25.0	750	1000	49000	5600	90	UV-STOP
BA 400/575 SE HR DIM 3200K	400/575	67	6.9/8	25.0	650/450	750/500	28000/40000	3200	90	40/50
BA 800 SE HR DAYLIGHT	800	95	8.5	25.0	1000	1500	64000	6000	95	UV-STOP
BA 800 SE HR 3200	800	95	8.5	25.0	650	750	64000	3200	90	UV-STOP
BA 1200 SE HR DAYLIGHT	1200	100	13.8	45.0	750	1000	110000	6000	95	100
BA 1200 SE HR G22 DAYLIGHT DIM-DEDO	1200	100	13.8	45.0	750	1000	110000	6000	95	100
BA 1600 SE HR DAYLIGHT	1600	110	16.7	45.0	500	750	145000	5600	95	110
BA 1600 SE HR DAYLIGHT-G22 special base	1600	110	16.7	45	500	750	145000	5600	95	110
BA 1800 SE HR DAYLIGHT	1800	100	20.0	45	750	850	170000	6000	>90	225
BA 2500 SE HR DAYLIGHT	2500	115	25.6	45.0	500	750	240000	6000	95	200
BA 4000 SE HR DAYLIGHT	4000	200	24.0	50.0	500	750	380000	6300	95	150

Item description	Cap	Dimensions				Max. bulb Temp.	Max. pinch Temp.	Figure Nr.	Packing Quantity	Ordering Code
		MOL	AG	Dia	LCL					
		mm	mm	mm	mm	C°	C°			
BA 200 SE HR LCL 3200	GZY9.5	92	-	20	52	700	350	1	10	0023940
BA 200 SE HR LCL DAYLIGHT	GZY9.5	90	5	20	52	700	350	1	10	0023944
BA 200 SE HR DAYLIGHT	GZY9.5	80	5	20	39	700	350	2	10	0023941
BA 200 SE HR DAYLIGHT FULL FROSTED	GZY9.5	80	5	20	39	700	350	2	10	0023803
BA 400 SE HR DAYLIGHT	GZZ9.5	110	6	23	60	700	350	3	10	0023883
BA 400 SE HR 3200K	GZZ9.5	110	6	23	60	700	350	3	10	0023898
BA 400 SE HR DAYLIGHT FULL FROSTED	GZZ9.5	110	6	23	60	700	350	3	10	0023990
BA 575 SE HR DAYLIGHT	G22	145	7	30	70	700	350	4	10	0023932
BA 400/575 SE HR DIM 3200K	GZZ9.5	110	4	30	60	700	350	4	10	0023892
BA 800 SE HR DAYLIGHT	G22	145	7	31	70	700	350	4	10	0023992
BA 800 SE HR 3200	G22	145	7	31	70	700	350	4	10	0023988
BA 1200 SE HR DAYLIGHT	G38	200	10	40	107	700	350	5	10	0023933
BA 1200 SE HR G22 DAYLIGHT DIM-DEDO	G22 spec	200	10	40	107	700	350	5	10	0023899
BA 1600 SE HR DAYLIGHT	G38	200	10	40	107	700	350	5	1	0023893
BA 1600 SE HR DAYLIGHT-G22 special base	G22 spec	175	10	40	85	700	350	5	10	0023894
BA 1800 SE HR DAYLIGHT	G38	200	10	40	107	700	350	5	1	0023810
BA 2500 SE HR DAYLIGHT	G38	240	14	60	127	700	450	6	1	0023934
BA 4000 SE HR DAYLIGHT	G38	250	20	75	142	700	450	6	1	0023937

Nominal values measured at rated wattage in horizontal position.



BriteArc Double Ended (BA DE)



BA 1200/2 DE S Gold  
BA 700/2 DE S  
BA 575/2 DE



BA 2500 DE & BA 2500 DE A



BA 6000 DE

BriteArc Double Ended lamps are metal halide light sources with excellent performance, specially designed for a wide variety of audio-visual applications. The BriteArc lamps are filled with mercury and rare earth elements to obtain a high efficacy and a stable colour. They can be re-struck at any time with a voltage peak from 25 to 55 kV.

Features

- High luminous efficacy
- Low infrared and Colour stability
- Excellent lumen maintenance
- Physical ruggedness, hot restrike

Applications

- Show lighting and Theatre
- Discotheque lighting
- Follow spots
- Effect lighting and Studio lighting
- Architectural lighting

Directions for use

- Burning position: universal for 575W, 700W and 1200W; horizontal plus or minus 30 degrees for BA 2500 DE, BA 2500 DE S; horizontal plus or minus 15 degrees for BA 2500 DE A, 4000W, 6000W and 12000W
- Only use in closed fixtures
- Can be operated on an electronic power supply or on a magnetic ballast

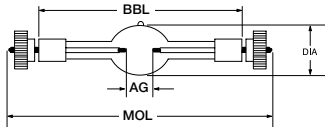


Fig. 1

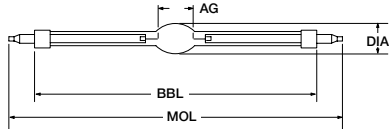


Fig. 2

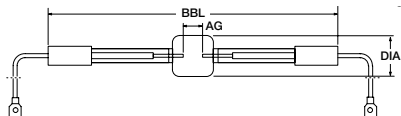


Fig. 3

Dimensions (mm)

BriteArc “BriteFit”



BA 300/2 LL mini BriteFit and BA 700/2 mini BriteFit



BA 700/2 BriteFit and BA 1500 BriteFit

BriteArc “BriteFit” lamps are metal halide light sources with excellent performance, specially equipped with a bayonet system “BriteFit”, for fast and easy replacement.

Features

- Easy replacement system Sylvania BriteFit
- No outer bulb – allows reduced lamp dimensions
- High luminous efficacy
- Low infrared
- Very good colour stability and quality
- Excellent lumen maintenance
- Physical ruggedness

Applications

- Show lighting
- Theatre
- Discotheque lighting
- Effect lighting
- Studio lighting

Directions for use

- Only use in closed fixtures
- Can be operated on electronic power supply or on a magnetic ballast
- Burning position – universal

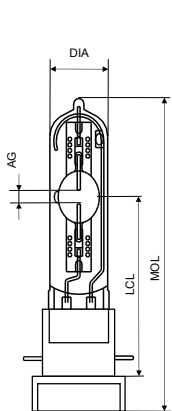


Fig. 1

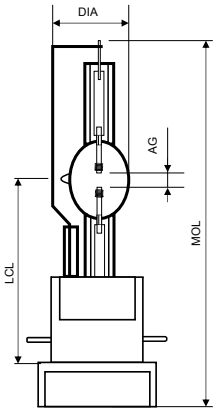


Fig. 2

Dimensions (mm)

Item description	Watt	Voltage	Current	Ignition Pulse	Average Life	Replacement Time	Luminous Flux	Colour Temp.	CRI	Total UV-output
	W	V	A	kV	hrs	hrs	lm	K		W
BA 575 DE DAYLIGHT	575	95	7	25,0	750	1000	49000	5600	70	70
BA 575/2 DE 8000	575	95	7	25,0	750	1000	44000	8000	70	100
BA 700/2 DE S 7500	700	70	11.2	25,0	1000	1250	56000	7500	70	100
BA 700/3 DE S 3200	700	70	11.2	25,0	750	1000	60000	3200	92	100
BA 1200 DE DAYLIGHT	1200	100	13.8	45,0	750	1000	110000	5600	80	140
BA 1200 DE S 6000 <b>GOLD</b>	1200	105	13.8	25,0	750	1000	110000	6000	90	130
BA 1200/2 DE S 7200 <b>GOLD</b>	1200	100	13.8	25,0	750	1000	95000	7200	77	160
BA 1800 DE DAYLIGHT	1800	100	20	5,0	750	850	170000	6000	>90	225
BA 2500 DE DAYLIGHT	2500	115	26.6	45,0	500	750	240000	5600	90	310
BA 2500 DE S	2500	115	26.6	45,0	500	750	240000	5600	90	310
BA 2500 DE A	2500	120	21.7	45,0	2000	2400	250000	5600	90	150
BA 4000 DE	4000	200	24.0	65,0	500	750	380000	6000	85	640
BA 6000 DE	6000	123	55.0	50,0	350	450	570000	6000	90	1000
BA 12000 DE	12000	160	82.0	65,0	500	550	1100000	6000	90	2200

Item description	Cap	Dimensions				Max. bulb Temp. °C	Max. pinch Temp. °C	Figure Nr.	Packing Quantity	Ordering Code
		MOL mm	AG mm	Dia mm	LCL mm					
BA 575 DE DAYLIGHT	SFc10-4	136	7	21	115	800	230	1	10	<b>0023921</b>
BA 575/2 DE 8000	SFc10-4	138	7	21	115	800	230	1	10	<b>0023917</b>
BA 700/2 DE S 7500	SFc10-4*	136	4	18	115	1000	500 <b>ETP**</b>	1	10	<b>0023994</b>
BA 700/3 DE S 3200	SFc10-4*	136	4	18	115	1000	500 <b>ETP**</b>	1	10	<b>0023993</b>
BA 1200 DE DAYLIGHT	SFc15.5-6	220	10	28	180	800	230	1	10	<b>0023922</b>
BA 1200 DE S 6000 <b>GOLD</b>	SFc10-4*	138	7	22,5	115	800	450 <b>ETP**</b>	1	10	<b>0023995</b>
BA 1200/2 DE S 7200 <b>GOLD</b>	SFc10-4*	136	7	21	115	800	500 <b>ETP**</b>	1	10	<b>0023996</b>
BA 1800 DE DAYLIGHT	SFc15.6	220	10	28	180	800	230	2	1	<b>0023811</b>
BA 2500 DE DAYLIGHT	SFa21-12	355	20.5	32	290	800	230	2	1	<b>0023923</b>
BA 2500 DE S	SFa21-12	210	20.5	32	-	800	230	2	1	<b>0023918</b>
BA 2500 DE A	SFc	364	25	36,5	182	800	230	2	1	<b>0023911</b>
BA 4000 DE	SFa21-12	405	34	40	340	800	230	2	1	<b>0023924</b>
BA 6000 DE	S25.5X60	-	22	52	450	900	230	3	1	<b>0023925</b>
BA 12000 DE	S30X70	-	32	65	470	900	230	3	1	<b>0023927</b>

\* Pre-focussed base. Nominal values measured at rated wattage in horizontal position.

\*\* Extreme Temperature Protection. Maximum allowed pinch temperature 500 °C.

Item description	Watt	Voltage	Current	Ignition Pulse	Average Life	Replacement Time	Luminous Flux	Colour Temp.	CRI	Total UV-output
	W	V	A	kV	hrs	hrs	lm	K		W
BA 300/2 MINI BRITFIT 8500	300	95	3.8	1.9	750	1000	23000	8400	2a	60
BA 300/2 LL MINI BRITFIT 8500	300	95	3.8	1.9	2000	2200	22000	8500	2a	60
BA 575/2 MINI BRITFIT 7500	575	95	7	2.5	750	1000	38600	7500	2a	75
BA 700/2 MINI BRITFIT 7500	700	70	10.2	2.5	750	1000	50000	7500	2a	100
BA 700 MINI BRITFIT DAYLIGHT	1000	82	12.2	2.5	750	850	50000	5600	85	100
BA 700/3 MINI BRITFIT 3200	700	70	10.2	2.5	750	1000	50000	3200	1b	100
BA 700/2 BRITFIT 7500	700	70	10.2	2.5	750	1000	50000	7500	2a	100
BA 700 BRITFIT DAYLIGHT	700	70	10.2	2.5	750	1000	50000	5600	2a	100
BA 700/3 BRITFIT 3200	700	70	10.2	2.5	750	1000	50000	3200	1b	100
BA 1000 MEDIUM BRITFIT DAYLIGHT	1000	82	12.2	4	750	850	85000	6000	85	130
BA 1000/3 MEDIUM BRITFIT 3200K	1000	82	12.2	4	750	850	85000	3200	90	130
BA 1500 BRITFIT DAYLIGHT	1500	100	16	3.5	750	1000	135000	6000	1a	200
BA 6000 DE	6000	123	55.0	50,0	350	450	570000	6000	90	1000
BA 12000 DE	12000	160	82.0	65,0	500	550	1100000	6000	90	2200

Item Description	Cap	Dimensions				Max Bulb Temp. °C	Max. pinch Temp. °C	Figure Nr.	Packing Quantity	Ordering Code
		MOL mm	AG mm	Dia mm	BBL mm					
BA 300/2 MINI BRITFIT 8500	PGJX28	122	5	23	67	500	350	1	10	<b>0023805</b>
BA 300/2 LL MINI BRITFIT 8500	PGJX28	122	5	23	67	500	350	1	10	<b>0023809</b>
BA 575/2 MINI BRITFIT 7500	PGJX28	112	4	23	56	1000	450	2	10	<b>0023812</b>
BA 700/2 MINI BRITFIT 7500	PGJX28	112	4	23.2	56	1000	450	2	10	<b>0023800</b>
BA 700 MINI BRITFIT DAYLIGHT	PGJX28	112	5.5	23.5	56	1000	450	2	10	<b>0023813</b>
BA 700/3 MINI BRITFIT 3200	PGJX50	125	4	23.2	65	1000	450	2	10	<b>0023808</b>
BA 700/2 BRITFIT 7500	PGJX50	125	4	23.2	65	1000	450	2	10	<b>0023806</b>
BA 700 BRITFIT DAYLIGHT	PGJX50	125	4	23.2	65	1000	450	2	10	<b>0023815</b>
BA 700/3 BRITFIT 3200	PGJX28	112	4	23.2	56	1000	450	2	10	<b>0023807</b>
BA 1000 MEDIUM BRITFIT DAYLIGHT	PGJX36	112	5.5	26.5	56	1000	450	2	10	<b>0023817</b>
BA 1000/3 MEDIUM BRITFIT 3200K	PGJX36	112	5.5	26.5	56	1000	450	2	10	<b>0023818</b>
BA 1500 BRITFIT DAYLIGHT	PGJX50	128	5	27	65	1000	450	2	10	<b>0023801</b>



# BriteArc Cross Reference

Code	Description	Philips	Osram	GE Lighting
Single Ended Non Hot Restrike				
0023987	BA 150 SE NHR	-	-	-
0023958	BA 400 SE NHR	MSR 400	HSR 400/60	-
0023960	BA 575 SE NHR	-	HSR 575/60	-
0023961	BA 700 SE NHR	MSR 700	HSR 700/60	-
0023935	BA 1200 SE NHR	MSR 1200	HSR 1200/60	-
Single Ended Non Hot Restrike – Long Life				
0023982	BA 70 SE T DAYLIGHT	CDM-T 70 4000K	HSD 70	CMH 70
0023978	BA 150 SE T DAYLIGHT	CDM-SA/T 150 4200K	HSD 150	CMH 150
0023814	BA 250 SE T DAYLIGHT	-	-	-
7220168	BA 200 SE D	MSD 200	HSD 200/60	-
7220169	BA 250 SE D	MSD 250	HSD 250/60	-
0023981	BA 575 SE D	MSD 575	HSD 575/72	-
Hot Restrike – High Colour Temperature				
0023998	BA 250/2 SE D 8500	MSD 250/2	HSD 250/80	CSD 250/2/SE
0024002	BA 575/2 SE NHR 7200	MSR 575/2	HSR 575/72	CSR 575/2/SE
0024000	BA 575/2 SE NHR 8500	-	-	-
Single Ended Hot Restrike				
0023940	BA 200 SE HR LCL 3200	-	-	-
0023944	BA 200 SE HR LCL DAYLIGHT	-	-	-
0023941	BA 200 SE HR DAYLIGHT	MSR 200 HR	HMI 200W/SE	CSR 200/SE/HR
0023803	BA 200 SE HR DAYLIGHT FULL FROSTED	-	-	-
0023883	BA 400 SE HR DAYLIGHT	MSR 400 HR	HMI 400W/SE	CSR 400/SE/HR
0023898	BA 400 SE HR 3200	-	-	-
0023990	BA 400 SE HR DAYLIGHT FULL FROSTED	-	-	-
0023932	BA 575 SE HR DAYLIGHT	MSR 575 HR	HMI 575W/SE	CSR 575/SE/HR
0023892	BA 400/575 SE HR DIM 3200K - DEDO	-	-	-
0023992	BA 800 SE HR DAYLIGHT	-	-	CSR 800/SE/HR
0023988	BA 800 SE HR 3200	-	-	-
0023933	BA 1200 SE HR DAYLIGHT	MSR 1200 HR	HMI 1200W/SE	CSR 1200/SE/HR
0023899	BA 1200 G22 DAYLIGHT DIM-DEDO	-	-	-
0023893	BA 1600 SE HR G38 DAYLIGHT	-	-	-
0023894	BA 1600 SE HR DAYLIGHT-G22 special base	-	-	-
0023810	BA 1800 SE HR DAYLIGHT	-	HMI 1800W/SE	-
0023934	BA 2500 SE HR DAYLIGHT	MSR 2500 HR	HMI 2500W/SE	CSR 2500/SE/HR
0023937	BA 4000 SE HR DAYLIGHT	MSR 4000 HR	HMI 4000W/SE	CSR 4000/SE/HR
Double Ended				
0023921	BA 575 DE DAYLIGHT	MSI 575W	HMI 575W/GS	CSR 575/DE
0023917	BA 575/2 DE 8000	MSI 575/2 DE	HTI 575/DE	CSR 575/2/DE
0023994	BA 700/2 DE S 7500	MSR Gold 700SA/2 DE	HTI 700W/D4/75	-
0023993	BA 700/3 DE S 3200	-	-	-
0023922	BA 1200 DE DAYLIGHT	MSI 1200W	HMI 1200W GS	CSR 1200/DE
0023995	BA 1200 DE S 6000 GOLD	MSR Gold1200SA/DE	HTI 1200W/D7/60	CSR 1200/S/DE
0023996	BA 1200/2 DE S 7200 GOLD	MSR Gold1200SA/2 DE	HTI 1200W/D7/75	-
0023811	BA 1800 DE DAYLIGHT	MSR 1800W DE	-	-
0023923	BA 2500 DE DAYLIGHT	MSI 2500W	HMI 2500W GS	CSR 2500/DE
0023918	BA 2500 DE S	-	HMI 2500W/S	-
0023911	BA 2500 DE A	MSA 2500 DE	HMI 2500W SFa21	-
0023924	BA 4000 DE	MSI 4000W	HMI 4000W	CSR 4000/DE
0023925	BA 6000 DE	MSI 6000W	HMI 6000W	CSR 6000/DE
0023927	BA 12000 DE	MSI 12000W	HMI 12000W/GS	CSR 12000/DE
Single Ended Britefit				
0023805	BA 300/2 MINI BRITEFIT 8500	MSR 300/2 MiniFastFit	-	CSR300/2/TAL
0023809	BA 300/2 LL MINI BRITEFIT 8500	MSD 300/2 MiniFastFit	HSD 300 W/80/P28 Lok-it	CSD300/2/TAL
0023812	BA 575/2 MINI BRITEFIT 7500	MSR 575/2 MiniFastFit	-	-
0023800	BA 700/2 MINI BRITEFIT 7500	MSR 700/2 MiniFastFit	HTI 700W/75/P28 Lok-it	CSR700/TAL -28
0023813	BA 700 MINI BRITEFIT DAYLIGHT	-	HTI 700/60/P28 Lok-it	-
0023808	BA 700/3 MINI BRITEFIT 3200	-	-	-
0023806	BA 700/2 BRITEFIT 7500	MSR 700/2 FastFit	HTi 700W/75/P50 Lok-it	CSR700/TAL - 50
0023815	BA 700 BRITEFIT DAYLIGHT	-	-	-
0023808	BA 700/3 BRITEFIT 3200	-	-	-
0023817	BA 1000 MEDIUM BRITEFIT DAYLIGHT	-	HTI 1000/PS Lok-it	-
0023818	BA 1000/3 MEDIUM BRITEFIT 3200K	-	-	-
0023801	BA 1500 BRITEFIT DAYLIGHT	MSR 1500 FastFit	HTI 1500 W/60/P50 Lok-it	CSR1500/TAL - 50