



# Dedicated Solutions for **Entertainment**

# How to order a "Socapex" from Socapex

## SOCAPEX 19 pins UL N° E166967(01) Certification

**Black coating - ROHS**  
**Split backshell**  
**7 pre-mate earth contacts**

**Female panel mount receptacle**



■ SL GD EF 419 AR  
■ SLX GD EF 419 AR

**Male plug**



■ SL D FMD 419 AR  
■ SLX D FMD 419 AR

**Black coating - ROHS**  
**Split backshell**

**Female panel mount receptacle**



■ SL D EF 419 AR  
■ SLX D EF 419 AR

**Male plug**



■ SL D FMD 419 AR  
■ SLX D FMD 419 AR

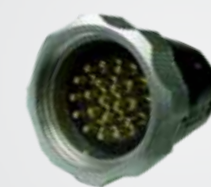
**White plating - Non ROHS**  
**Split backshell**  
**7 pre-mate earth contacts**

**Female panel mount receptacle**



■ SL G EF 419 AR  
■ SLX G EF 419 AR

**Male plug**



■ SL FMD 419 AR  
■ SLX FMD 419 AR

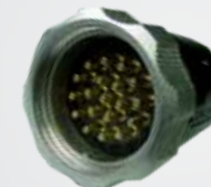
**White plating - Non ROHS**  
**Split backshell**

**Female panel mount receptacle**



■ SL EF 419 AR  
■ SLX EF 419 AR

**Male plug**



■ SL FMD 419 AR  
■ SLX FMD 419 AR

■ Solder version  
■ Crimp version



## SOCAPEX 19 pins UL N° E166967(01) Certification

**Female inline receptacle**



- ☐ SL GD FFDR 419 AR
- ☐ SLX GD FFDR 419 AR

**Male panel mount plug**



- ☐ SL D EME 419 AR
- ☐ SLX D EME 419 AR

**Female inline receptacle**



- ☐ SL D FFDR 419 AR
- ☐ SLX D FFDR 419 AR

**Male panel mount plug**



- ☐ SL D EME 419 AR
- ☐ SLX D EME 419 AR

**Female inline receptacle**



- ☐ SL G FFDR 419 AR
- ☐ SLX G FFDR 419 AR

**Male panel mount plug**



- ☐ SL EME 419 AR
- ☐ SLX EME 419 AR

**Female inline receptacle**



- ☐ SL FFDR 419 AR
- ☐ SLX FFDR 419 AR

**Male panel mount plug**



- ☐ SL EME 419 AR
- ☐ SLX EME 419 AR

- ☐ Solder version
- ☐ Crimp version

Choose the best for your stage lighting

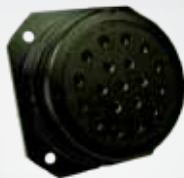
# How to order a "Socapex" from Socapex...

## SOCAPEX 19 pins UL N° E166967(01) Certification

### Black coating - ROHS Monopiece backshell PG29

Cable diameter 15 mm  
(0,59 in) to 24 mm (0,94 in)  
Sealed IP 67

#### Female panel mount receptacle



■ SL GD EF 419 AR  
■ SLX GD EF 419 AR

#### Male plug

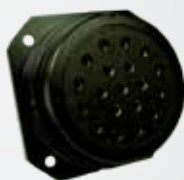


■ SL D FMD PG29 419 AR  
■ SLX D FMD PG29 419 AR

### Black coating - ROHS Monopiece backshell PG36

Cable diameter 24 mm  
(0,94 in) to 34 mm (1,34 in)  
Sealed IP 67

#### Female panel mount receptacle



■ SL GD EF 419 AR  
■ SLX GD EF 419 AR

#### Male plug



■ SL D FMD PG36 419 AR  
■ SLX D FMD PG36 419 AR

## SOCAPEX 7 pins UL N° E166967(01) Certification

### Black coating - ROHS Split backshell

Only available in solder version

#### Female panel mount receptacle



SL D EF 37 Y

#### Male plug



SL D FMD 37 Y

### White plating - Non ROHS Split backshell

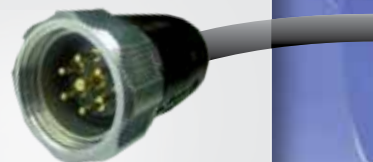
Only available in solder version

#### Female panel mount receptacle



SL D EF 37 Y

#### Male plug



SL FMD 37 Y



## SOCAPEX 19 pins UL N° E166967(01) Certification

Female in line receptacle



- SL GD FFDR PG29 419 AR
- SLX GD FFDR PG29 419 AR

Male panel mount plug



- SL D EME 419 AR
- SLX D EME 419 AR

Female in line receptacle



- SL GD FFDR PG36 419 AR
- SLX GD FFDR PG36 419 AR

Male panel mount plug



- SL D EME 419 AR
- SLX D EME 419 AR

## SOCAPEX 7 pins UL N° E166967(01) Certification

Female in line receptacle



SL D FFDR 37 Y

Male panel mount plug



SL D EME 37 Y

Female in line receptacle



SL FFDR 37 Y

Male panel mount plug



SL EME 37 Y

## Backshell

### Straight or right-angle backshell:

Connector size	Backshell reference	
	Straight	Right-angle
	Black (non-conductive)	
40	47380N	47384N

Connector size	Backshell reference	
	Straight	Right-angle
	Nickel (conductive)	
40	47380NI	47384NI

Connector size	Backshell reference	
	Straight	Right-angle
	Black (non-conductive)	
30	47379N	47383N

Connector size	Backshell reference	
	Straight	Right-angle
	Nickel (conductive)	
30	47379NI	47383NI

- Solder version
- Crimp version



If you want to order your female connectors without earth contacts, remove the letter "G" after "SL" or "SLX"

# Solutions for show control

## THE "SOCA" SL 19 PINS

- ▶ 19 pins configuration (layout 419AR), with high strength-weight ratio for stage lighting
- ▶ UL recognized, RoHS version
- ▶ Supplied with solder or crimp gold plated contacts (up to 25A)
- ▶ Closed entry female contacts & SLG version with 7 first mate last break contacts provide electrical safety
- ▶ Split backshell with efficient cable clamp for simple wiring and maintenance
- ▶ Monopiece backshell with IP67 sealing for outdoor applications

[www.socapex.com](http://www.socapex.com)



## THE "SOCA" SL 7 PINS (LAYOUT 37Y)

- ▶ For Hoist Motor applications
- ▶ UL recognized, RoHS version
- ▶ Layout supplied with high quality gold plated solder contacts and closed entry female contacts for electrical safety
- ▶ Aluminium alloy shell and reinforced locking ring with excellent reliability and robustness
- ▶ Split backshell with efficient cable clamp for simple wiring and maintenance

[www.socapex.com](http://www.socapex.com)



## BROADCAST SOLUTIONS

- ▶ 110 connector - fully compliant to SMPTE 304M for HDTV broadcast camera applications. Both intermable and interchangeable with existing SMPTE 304M compliant connectors
- ▶ FS12A twelve-channel fiber optic connector for high channel count, deployable broadcast applications
- ▶ Hermaphroditic MinTAC dual-channel fiber optic connector for audio, lighting and broadcast applications. Ideal for indoor audio and lighting consoles and systems and outdoor environments

[www.fibersystems.com](http://www.fibersystems.com)



## Hoist Motors

## Stage Lighting

## MP SERIES

- ▶ Ideal for audio snake cables, concert touring systems and outside broadcast applications

[www.amphenolaudio.com](http://www.amphenolaudio.com)



## Audio & Consoles



## C 146

Heavy/mate connectors - for Power and high poles

- For applications requiring high power or high number of poles
- Up to 250 A or up to 280 pins

[www.amphenol.de](http://www.amphenol.de)

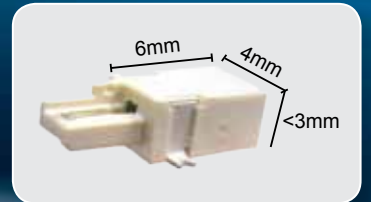


## SSL SERIES

SSL 1.1 & 1.2

- For indoor to outdoor lamps and luminaires
- Board to board connection

[www.amphenolltw.com](http://www.amphenolltw.com)



## Displays

## HYBRID CONNECTOR - IP X8 WATERPROOF HYBRID CONNECTORS

- Designed for lighting control protocols & applications

[www.amphenolltw.com](http://www.amphenolltw.com)

## RUGGED & SEALED ETHERNET CONNECTOR – RJ & USB FIELD

- For show control applications
- Allows you to use an Ethernet Class D / Cat5E and class E / Cat6 connection for 10BaseT, 100 BaseTX or 1000 BaseT networks for outdoor applications
- Use a standard RJ45 cordset in a composite or metallic plug which will protect it from shocks, dust and fluids
- Robust & sealed (IP67) plastic or metallic shell with quarter turn coupling to secure your network
- Also available rugged and sealed USB connectors & USB memory sticks

[www.amphenol-socapex.com](http://www.amphenol-socapex.com)



## AC SERIES XLR CONNECTORS

- For audio signals in professional sound applications such as microphones, amplifiers, speakers and public address systems

[www.amphenolaudio.com](http://www.amphenolaudio.com)



## Solutions for low profile LED lighting luminaire

- Designed for low profile LED lighting luminaires

[www.amphenolltw.com](http://www.amphenolltw.com)

