

# CONNECTING THE WORLD



**Featured Products**

2023/01

---

**Neutrik**  
**Group**

CONNECTING  
THE  
WORLD

---

## The Neutrik Group is an international corporation headquartered in Schaan, Liechtenstein.

---

The Neutrik Group develops, designs, manufactures, and globally distributes innovative electrical and electronic interconnect products and systems under the NEUTRIK, REAN and CONTRIK brands. As a multi-brand company, Neutrik Group has long dominated the world of professional entertainment and industrial applications, setting new standards in a wide range of segments. With about 1,000 employees, the Neutrik Group is a global leader in audio, video, power, and data connectors, digital network components, and power distribution and potential equalization systems.

The Neutrik Group includes strategically placed subsidiaries in the United States of America, Great Britain, France, Japan, China, Hong Kong and Germany. A network of exclusive distributors in more than 80 countries worldwide provides global sales, technical support and distribution. The corporate headquarters is based in Schaan in the Principality of Liechtenstein where management, R&D, logistics, manufacturing and finance are located.





**NEUTRIK®**

**NEUTRIK®**

NEUTRIK offers premium copper connectors, innovative fiber optic systems and unique digital audio network devices.



**REAN®**

**REAN®**

REAN provides a comprehensive range of products for audio, video and lighting featuring robust and reliable connectors that promise unrivalled cost-performance ratios.

**CK**  
**CONTRIK®**

**CONTRIK®**

CONTRIK provides reliable power distribution systems, innovative equipotential bonding systems and high-quality power cables.



TRUST THE ORIGINAL

# NEUTRIK

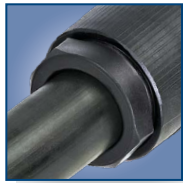
## Featured Products

**NEUTRIK®**





Ergonomic quick lock



Cable O.D.  
10 - 16 mm



IEC, EN, UL  
Certified



**TRUE  
OUTDOOR  
PROTECTION**



## powerCON® TRUE1® TOP Large



NAC3FX-W-TOP-L



NAC3MX-W-TOP-L



certified for H07RN-F 3G2,5



certified for SOOW AWG12/3 &  
SJOOW AWG12/3

- Heavy duty sealed power connector for harsh and demanding environment
- True mains connector system with breaking capacity (CBC)
- Protection against unintended opening
- IEC EN 60320-1 (16 A, 250 V) and UL 60320-1 (20 A, 250 V) certified, thus accepted as a component for cord sets acc. to IEC 60799 and equipment acc. to IEC 62368-1
- TOP True outdoor protection
- IP65 / UV and corrosion resistant
- Available for cable O.D. 10 - 16 mm
- Superior NEUTRIK quality standard

## Ordering Information

### Cable Connector

NAC3FX-W-TOP-L	Locking Power-in cable connector for cable diameters 10 - 16 mm (0.39 - 0.63"), female, screw terminals, IP 65
NAC3MX-W-TOP-L	Locking Power-out cable connector for cable diameters 10 - 16 mm (0.39 - 0.63"), male, screw terminals, IP 65



Power-in (blue)



Power-out (grey)


Ergonomic design with slip-proof  
two-component molded housing

IEC, EN, UL  
Certified


## powerCON<sup>®</sup> – single phase CBC cable connector



NAC3FXXA-W-S



NAC3FXXB-W-S

- Single phase lockable power connector with Circuit Breaking Capability when mated with powerCON XXSeries Receptacle
- Protection against unintended opening
- IEC EN 60320-1 (16 A, 250 V) and UL 60320-1 (20 A, 127 V) certified, thus accepted as a component for cord sets acc. to IEC 60799 and equipment acc. to IEC 62368-1
- Power-in (blue) and power-out (grey) versions with different keying to avoid the possibility of intermating
- Ergonomic design with slip-proof two-component molded housing
- Certified for a large variety of different cables
  - "-S" version covers cable O.D. 6 - 12 mm
  - "-L" version covers cable O.D. 10 - 16 mm

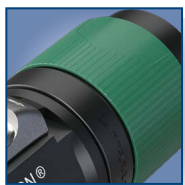
## Ordering Information

### Cable Connector

NAC3FXXA-W-S	Locking Power-in cable connector for cable diameters 6 - 12 mm (0.24 - 0.47"), blue colored version, female, screw terminals
NAC3FXXA-W-L	Locking Power-in cable connector for cable diameters 10 - 16 mm (0.39 - 0.63"), blue colored version, female, screw terminals
NAC3FXXB-W-S	Locking Power-in cable connector for cable diameters 6 - 12 mm (0.24 - 0.47"), grey colored version, female, screw terminals
NAC3FXXB-W-L	Locking Power-in cable connector for cable diameters 10 - 16 mm (0.39 - 0.63"), grey colored version, female, screw terminals



2-pole (brown)



4-pole (green)



## speakON® FXX series – 2/4 pole loudspeaker connector



NL2FXX-W-S



NL4FXX-W-S



NL4FXX-W-L

- Upgraded 2-pole (brown) & 4-pole (green) speakON connectors
- IEC EN 61984, UL 1977 and CSA C22.2 No.182.3 certified
- Ergonomic design with slip-proof two-component molded housing
- Bushing with protection against unintended opening
- Certified for a large variety of different cables
  - "-S" version covers cable diameters 6 - 12 mm
  - "-L" version covers cable diameters 10 - 16 mm

## Ordering Information

### Cable Connector

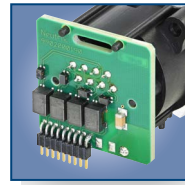
NL2FXX-W-S	Locking 2-pole cable connector for cable diameters 6 - 12 mm (0.24 - 0.47"), brown colored version, female, screw terminals
NL4FXX-W-S	Locking 4-pole cable connector for cable diameters 6 - 12 mm (0.24 - 0.47"), green colored version, female, screw terminals
NL4FXX-W-L	Locking 4-pole cable connector for cable diameters 10 - 16 mm (0.39 - 0.63"), green colored version, female, screw terminals



Light ring


Asymmetrical push  
tab


Standard cutout


etherCON® Magnetics -  
Horizontal PCB


## etherCON® halo &amp; etherCON® halo magnetics



NE8FAH-LR-DAE



NE8FAH-M-Mb-LR-DAE



NE8FAH-M-Gb-LR-DAE

- Light ring offers innovative, forward-looking alternative to light pipes
- Asymmetrical matte color push tab for vertical space saving compared to standard push tabs
- Integrated magnetics circuitry within the chassis connector
- Cat 5e (100 Mbits and 1 Gbits) transmission performance according to IEEE 802.3, 802.3b, and 802.3ab standards
- Space-saving design, as it removes the need for HF part otherwise required on the customer motherboard.
- Components used: transformers, ferrite core and Bob Smith termination for the automatic termination in case of no cable connection
- In case of overvoltage harm, the connector can be exchanged, and the main board is still safe.
- Overvoltage protection > 2 kV for 1 Gb/s available via optional customer-installed capacitor

## Ordering Information

## etherCON chassis

NE8FAH-LR-DAE Horizontal PCB mount RJ45 receptacle, A-Series cutout, Asymmetrical ESD push tab, Light ring

## etherCON magnetics chassis

NE8FAH-M-Mb-LR-DAE Horizontal PCB mount RJ45 receptacle, A-Series cutout, Asymmetrical ESD push tab, Light ring, integrated magnetics - 100 Mbits Cat 5e transmission performance

NE8FAH-M-Gb-LR-DAE Horizontal PCB mount RJ45 receptacle, A-Series cutout, Asymmetrical ESD push tab, Light ring, integrated magnetics - 1 Gbits Cat 5e transmission performance





Light ring



Asymmetrical push tab



Standard cutout



Standard cutout



## XLR halo



NC3FAH2-LR-DAE



NC3FAH2-LR-DAE



NC5MAH2-LR-DAE

- Smallest XLR receptacles, highest packing density
- Multiple colors available via left- and right-side SMD LEDs
- Plastic housing, steel latch lock
- Attractive signaling element
- Tulip type female contact
- Polished contact areas and hard gold plating
- Compound material improves ESD performance
- Housing flammability UL94 V-0
- Vertical space saving compared to standard push tabs
- Light ring offers innovative, forward-looking alternative to light pipes
- Standard cutout / no additional holes for light pipes required
- Improved visibility compared to light pipes
- Matte color of push tab eliminates disturbing light reflections from a metal push tab
- Easier to use push tab with larger push area

## Ordering Information

### Female XLR chassis

NC3FAH2-LR-DAE	3 pole female XLR receptacle, A-Series cutout, Asymmetrical ESD push tab, Light ring
NC5FAH2-LR-DAE	5 pole female XLR receptacle, A-Series cutout, Asymmetrical ESD push tab, Light ring

### Male XLR chassis

NC3MAH2-LR-DAE	3 pole male XLR receptacle, A-Series cutout, Asymmetrical ESD push tab, Light ring
NC5MAH2-LR-DAE	5 pole male XLR receptacle, A-Series cutout, Asymmetrical ESD push tab, Light ring

# opticalCON® DRAGONFLY

LOW MAINTENANCE  
AND EASY TO CLEAN

DUST AND WATERPROOF TO  
IP68 IN MATED CONDITION

CHASSIS CONNECTOR  
female

CHASSIS CONNECTOR  
male



RELIABLE PUSH/PULL  
LOCKING MECHANISM

HIGH PERFORMANCE –  
LOW LOSS

FUSION SPLICE TECHNOLOGY –  
FIELD REPAIRABLE

LONG LIFE – 10'000  
MATING CYCLES

HYBRID CONNECTION –  
POWER AND DATA

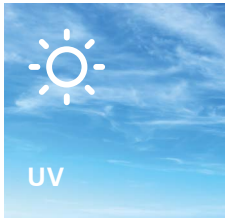
PROVEN ANTI-KINK  
BOOT DESIGN

CABLE CONNECTOR male

FIXED CONNECTOR male

CABLE CONNECTOR female





**DRAGONFLY is a ruggedized and low maintenance hybrid cable connector for indoor and outdoor use.**

## CAMERA CONNECTOR SYSTEM

Neutrik's new fiber optic connector series offers advanced lens technology for the Broadcast and AV Market. DRAGONFLY is more robust, reliable and easier to maintain than common hybrid camera signal transmission systems.

With technology based on fiber lenses and fusion splicing, Neutrik's DRAGONFLY achieves an extremely robust signal with minimal loss. opticalCON DRAGONFLY combines all the advantages of lens technology and makes it competitive with physical contact connectivity.

The DRAGONFLY connector offers long life with very low maintenance. It can also withstand harsh and demanding environments and is dust and moisture insensitive. Additionally, DRAGONFLY is robust against vibration and therefore has low potential for damage. And if there ever is a problem, DRAGONFLY is field repairable. With this new technology, DRAGONFLY provides a complete solution for the Broadcast and AV Market.

## INNOVATIVE AND FUTURE PROOF

- fusion splice technology – field repairable
- High performance – low loss
- Consistent quality
- 100% reliable even at extreme temperature fluctuations
- Permanent connection

## SIMPLE AND EFFICIENT

- hybrid connection – power and data over one connection
- Low maintenance interval
- Easy switching to DRAGONFLY – fits into standardized cutouts
- Easy cleaning with compressed air and water
- Competitive price

## ROBUST AND RELIABLE

- Extremely robust system
- Reliable push/pull locking mechanism
- Dust and waterproof according to IP68
- Proven anti-kink boot design
- Long life – 10.000 mating cycles

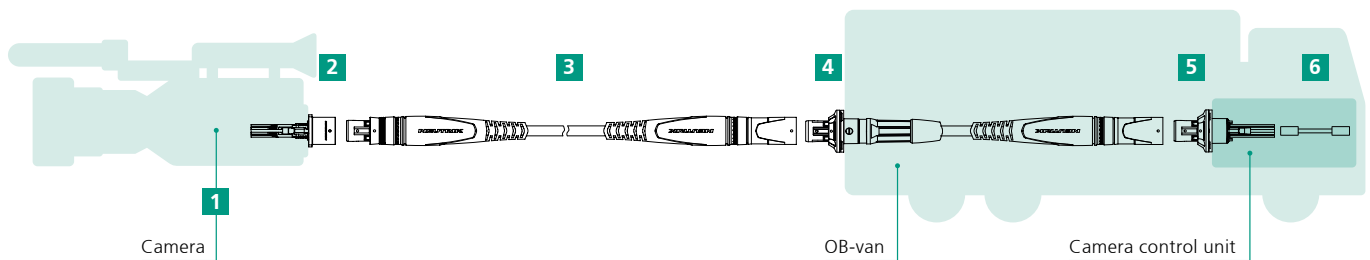
## FIXED RUGGED CONNECTOR male



## APPLICATION

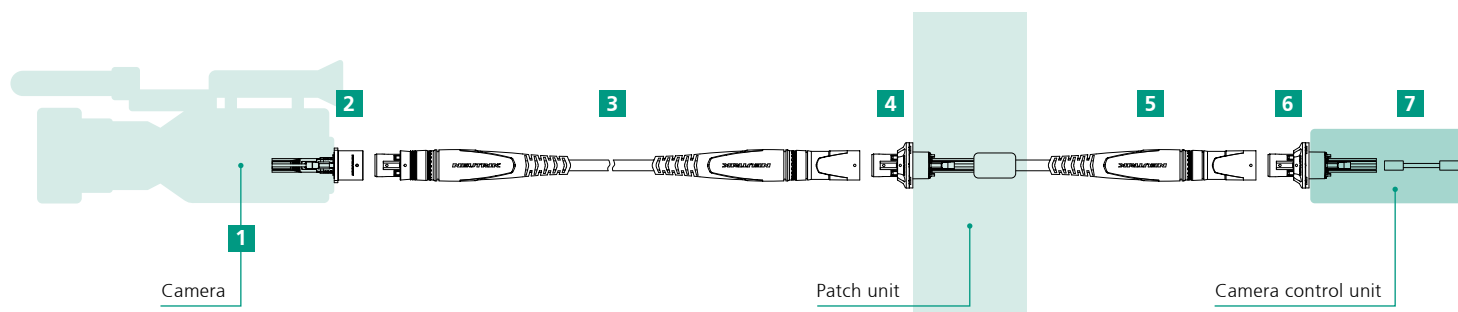
The opticalCON DRAGONFLY system is the perfect solution for live broadcast productions.

## OB CONFIGURATION



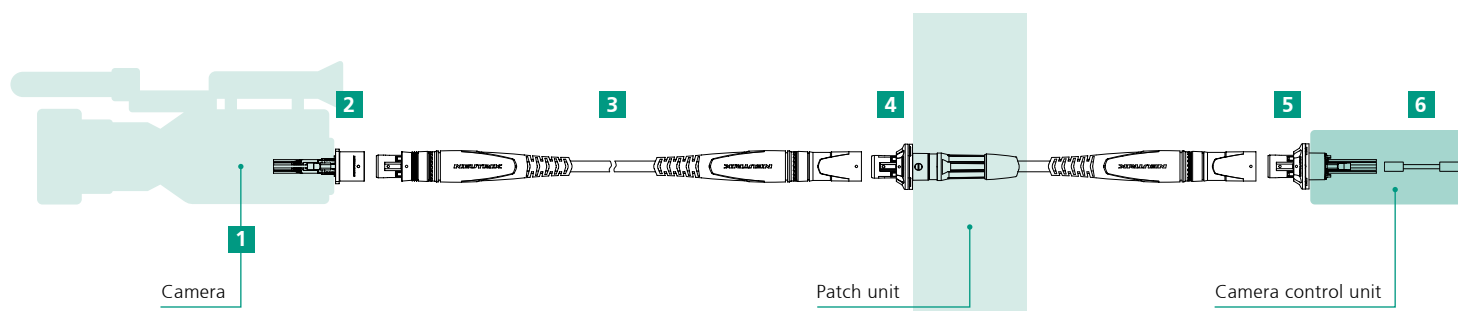
- |                  |                   |
|------------------|-------------------|
| 1 NKOBF2S-XP-0-1 | 4 NKO2SMW-XP-0-10 |
| 2 NO2FW-XP       | 5 NO2MW-XP        |
| 3 NKO2S-XP-0-100 | 6 NKOBM2S-XP-0-1  |

## STUDIO CONFIGURATION PATCHING



- |                         |                           |                         |
|-------------------------|---------------------------|-------------------------|
| <b>1</b> NKOFB2S-XP-0-1 | <b>4</b> NO2MW-XP         | <b>7</b> NKOBM2S-XP-0-1 |
| <b>2</b> NO2FW-XP       | <b>5</b> NKOFM2S-XP-0-100 |                         |
| <b>3</b> NKO2S-XP-0-100 | <b>6</b> NO2MW-XP         |                         |

## STUDIO CONFIGURATION FIXED



- |                         |                          |
|-------------------------|--------------------------|
| <b>1</b> NKOFB2S-XP-0-1 | <b>4</b> NKO2SMW-XP-0-50 |
| <b>2</b> NO2FW-XP       | <b>5</b> NO2MW-XP        |
| <b>3</b> NKO2S-XP-0-100 | <b>6</b> NKOBM2S-XP-0-1  |





2CH Cable



4CH Cable



Heavy-duty  
connector IP68

# FIBERFOX

## FIBERFOX 2CH & 4CH Cable



NKO2M3-FX\*



NKO4M3-FX\*

- Ø = 5 mm (2CH), Ø = 5.5 mm (4CH), PUR flame-retardant, halogen-free, bent tolerant Cable
- Heavy-duty, connectors IP68 (even unprotected)
- Cables are direct prolongable, no couplers required
- Wear-free connectors, > 5'000 mating cycles without any maintenance
- No special cleaning or measurement tools required
- Compatible with 2CH / 4CH FIBERFOX System and all MIL-DTL-83526 Systems



FIBERFOX Cable

## Ordering Information

### Cable

NKO2M3-FX-\*. \* FIBERFOX EBC 15 Multimode 2CH OM3

NKO4M3-FX-\*. \* FIBERFOX EBC 15 Multimode 4CH OM3

\*1) Packaging Options (0 ... Airspool; 2 ... Drum Schill GT310; 3 ... Drum Schill GT380)

\*2) Cable length on request



2CH briDge



4CH briDge



Rubber seal flang

## FIBERFOX

### FIBERFOX 2CH & 4CH briDge



NO2M4DW-FX



NO4M4DW-FX



- Suitable for installation and wireways without special tools
- Integration of other fiber optic systems into FIBERFOX
- No splicer, no expertise required for Installation
- Very compact design - fits in every D-hole just like opticalCON®
- Easy patching with common patch Cords (LC to LC, LC to SC, LC to ST)
- IP68 Waterproof even without a protective cap, optimized for outdoor use
- Extremely service-friendly

### Ordering Information

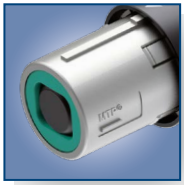
briDge	Order Code	
NO2M4DW-FX	1027421	FF EBC15 briDge Chassis 2CH MM OM4
NO4M4DW-FX	1027422	FF EBC15 briDge Chassis 4CH MM OM4

# opticalCON<sup>®</sup> ADVANCED & LITE

**Professional fiber optic connectors for 2 / 4 / MTP<sup>®</sup> 12 / MTP<sup>®</sup> 16 / MTP<sup>®</sup> 24 and MTP<sup>®</sup> 48 channels systems**

- Superior performance / low insertion loss
- Standard LC and MTP<sup>®</sup> compatibility
- Low maintenance
- Simple intergration / D-shape
- Robust and reliable
- Higher Data Capacity
- Cost optimization per single fiber / data channel
- High reliability – 16 or 48 physical data channels in a single cable
- High setup speed – Up to 24x less cabling & space saving & weight reduction & low maintenance





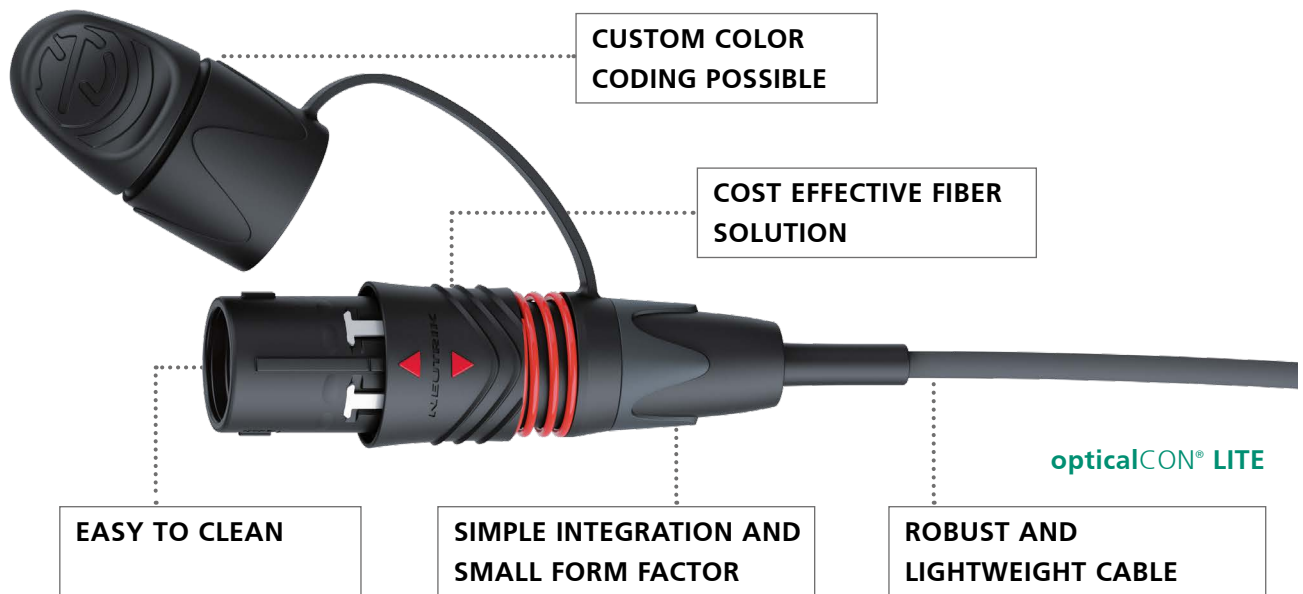
opticalCON  
ADVANCED



opticalCON LITE



opticalCON Chassis



**opticalCON® CHASSIS CONNECTORS**

**STANDARD D-SIZE  
METAL SHELL**

**AUTOMATIC SEALING  
SHUTTER**

**SIMPLE INTEGRATION AND  
SMALL FORM FACTOR**

**COMPATIBLE TO STANDARD LC  
AND MTP®/MPO CONNECTORS**

## New professional fiber optic connectors MTP® 16 and MTP® 48

opticalCON® MTP® 48



opticalCON® MTP® 16

- Higher Data Capacity
- Cost optimization per single fiber / data channel
- High reliability - 16 or 48 physical data channels in a single cable
- High setup speed - Up to 24 x less cabling & space saving & weight reduction & low maintenance





THE SMART WAY TO CONNECT

# REAN

## Featured Products

**REAN**®



# ROBUST COMPREHENSIVE RELIABLE

## Product portfolio

REAN offers a comprehensive range of connectors focusing on pro-audio, lighting and digital signage, where robust design, high reliability and an excellent price-performance ratio are paramount.



XLR



PLUGS & JACKS



RCA / DIN



ETHERNET





AUDIO

LIGHTING

DIGITALE  
SIGNAGE

INDUSTRY



SPEAKER



POWER



POWER



Metal quick lock system



Robust and reliable

## Power X Series



RAC3F-X-000



RAC3M-X-000



RRAC3F-X-000



RRAC3M-X-000

- Robust twist lock system - provides secure locking
- Designed for outdoor applications, IP65 protection, weather resistant.
- Chuck type strain relief - best cable retention, easy to assemble
- Extremely robust and reliable
- Metal insert in locking area

## Ordering Information

### Cable Connector

RAC3F-X-000	Locking cable connector for cable diameters 6 - 12 mm (0.23 - 0.47"), female, screw terminals
RAC3M-X-000	Locking cable connector for cable diameters 6 - 12 mm (0.23 - 0.47"), male, screw terminals
RRAC3F-X-000	Chassis connector, female, flat tabs terminals
RRAC3M-X-000	Chassis connector, male, flat tabs terminals



SUPERIOR RELIABILITY AND SAFETY

# CONTRIK

## Featured Products

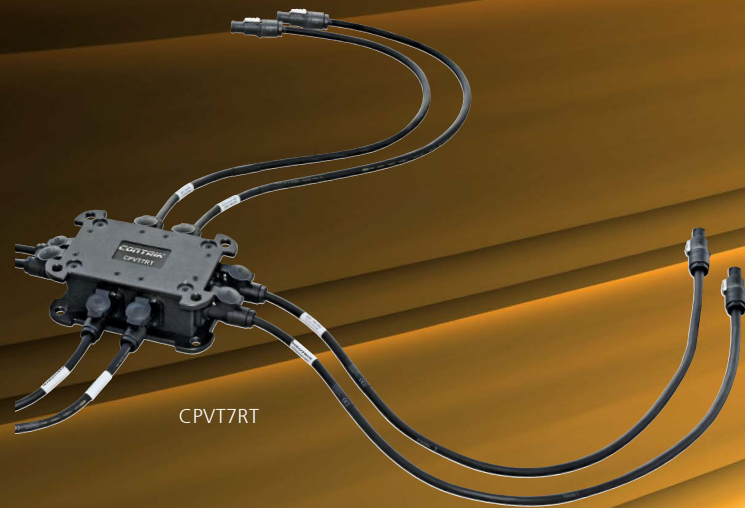
***CONTRIK***<sup>®</sup>



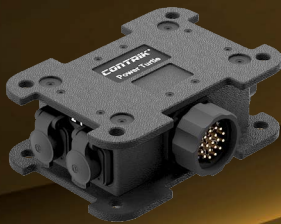
## Power Turtle

**Power Turtle Xtreme Outdoor (XO)** is a compact distribution solution for mobile outdoor applications. Rugged EASYLEN® housing is ideally suited for outdoor usage and demanding applications under harsh conditions.

- Extreme robust and safe EASYLEN® housing with leather grain texture
- High quality connector and circuit breakers from renowned brands
- Flame retardant (UL94-V2) and non-conductive housing material
- High outdoor protection (IP65, up to IK10+)
- Light weight, compact and stackable housing design
- Versatile mounting options (truss clamp, mounting wholes for pegging or suspension)

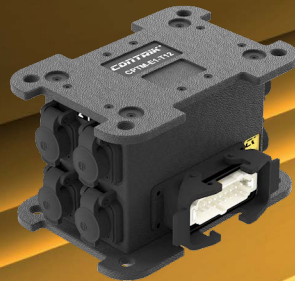


CPVT7RT



### Power Turtle 6 x Out

E16 Harting in  
Socapex 419 In



### Power Turtle 12 x Out

E16 Harting in  
Socapex 419 In



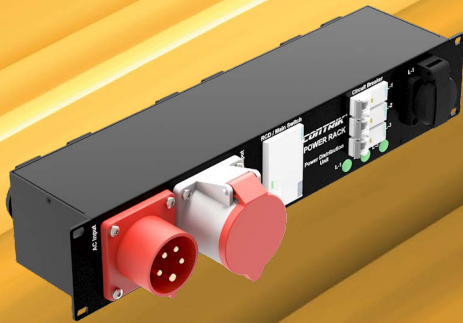
### Power Turtle 6 x Out

CEE32A  
MCB circuit breaker

## Power Racks

**Power Rack Xtreme (X)** is a powerful and highly reliable distribution solution for installation in the 19" Rack. It is ideally suited for amplifier rack wiring applications.

- High quality electrical and electronical component from the renowned brands
- Circuit protection with residual current device (RCD) and miniature circuit breakers (MCB)
- Developed and assembled in European Union
- Attractive price / value ration



### Power Racks

C16A Schuko Out  
C32A Schuko Out  
C16A powerCON Out

## Power Container

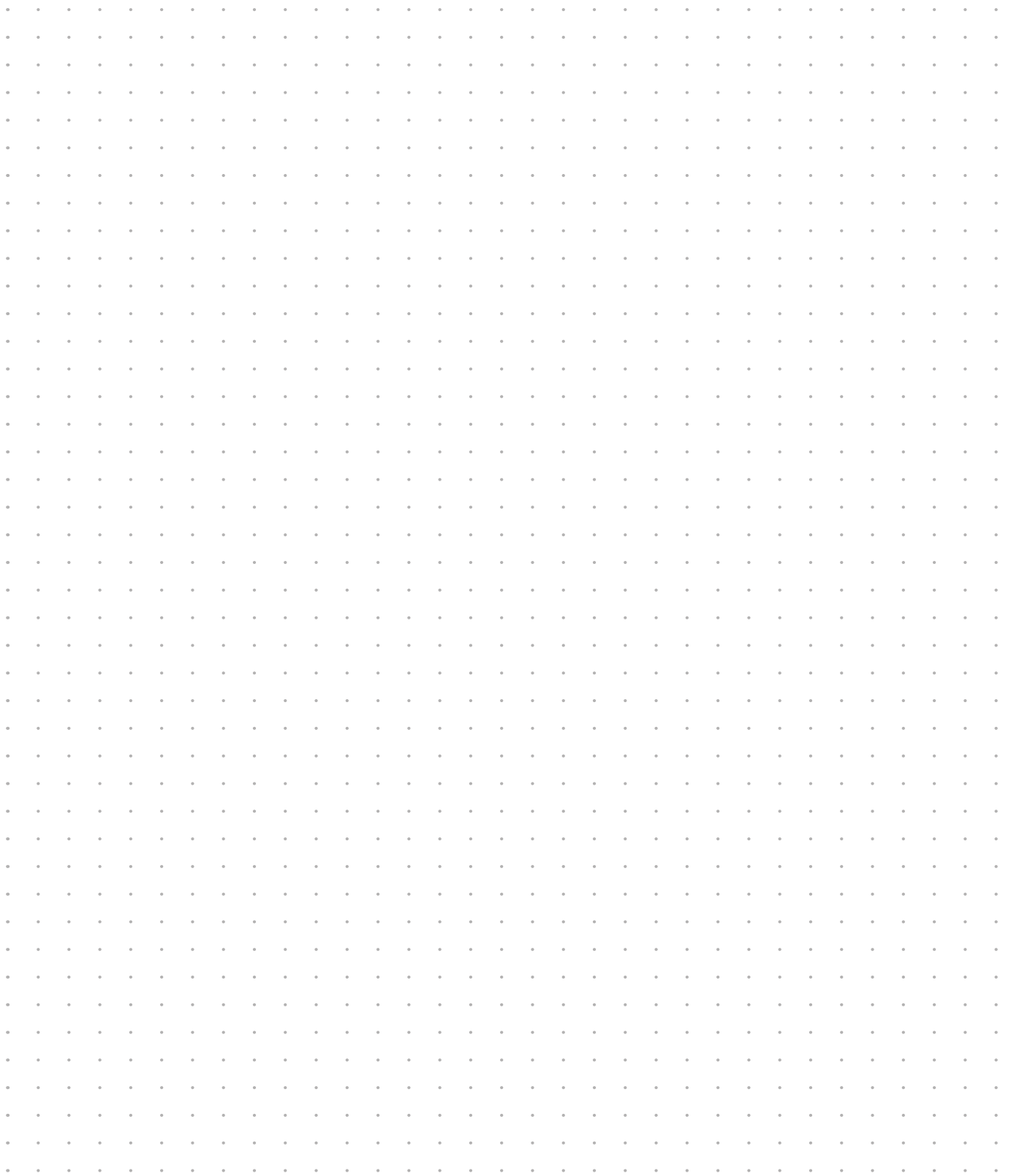
**Power Container Xtreme Outdoor (X)** is a highly reliable, rugged and powerful distribution solution. It is ideally suited for demanding mobile applications esp. video walls.

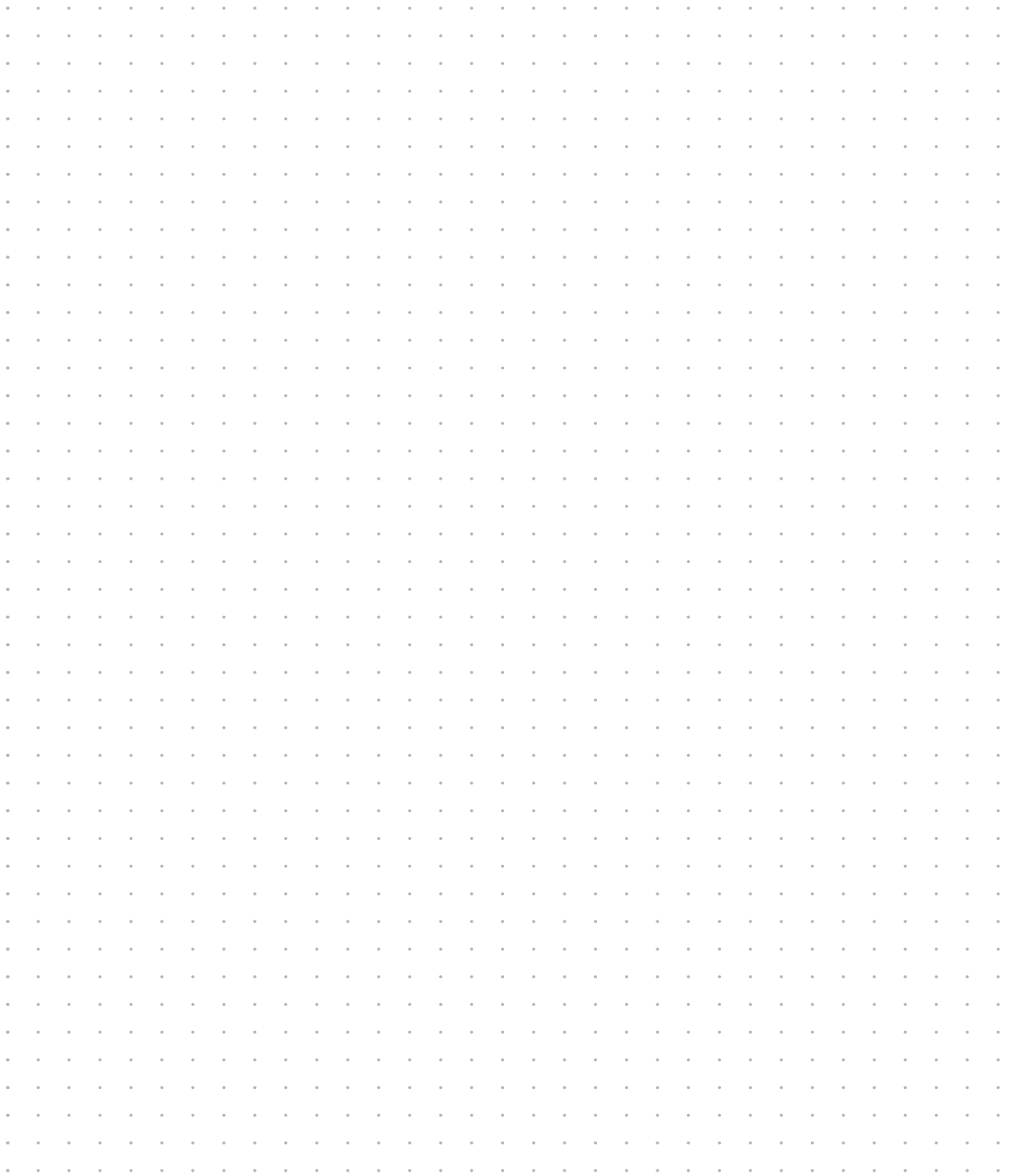
- Extreme robust and safe EASYLEN® housing with leather grain texture
- High mechanical protection (IK) and environmental protection (IP44)
- Thought through housing concepts for easy handling / transport (stackable, connector protection, integrated handles)
- High quality connectors, circuit breakers (MCB, RCD) and measurement devices from the renowned european brands
- Interfaces for CEE, Harting E19, powerCON TRUE1 connectors
- Developed and assembled in European Union



### Power Container

C63A 4 x E16 Harting Out  
C32A 2 x E16 Harting Out







# CONNECTING THE WORLD

## LIECHTENSTEIN (HEADQUARTERS)

Neutrik AG, Im alten Riet 143,  
9494 Schaan, Liechtenstein  
T +423 237 24 24, F +423 232 53 93, neutrik@neutrik.com

## USA

Neutrik Americas, 4115 Taggart Creek Road,  
Charlotte, North Carolina, 28208  
T +1 704 972 30 50, info@neutrikusa.com

## GERMANY / NETHERLANDS / DENMARK / AUSTRIA

Neutrik Vertriebs GmbH, Felix-Wankel-Straße 1,  
85221 Dachau, Germany  
T +49 8131 28 08 90, neutrik@neutrik.de

## FRANCE

Neutrik© France, 52 Rue d'aguessseau,  
92100 Boulogne  
T +33 1 41 31 67 50, info@neutrik.fr

## GREAT BRITAIN

Neutrik (UK) Ltd., Westridge Business Park, Cothey Way Ryde,  
Isle of Wight PO33 1 QT  
T +44 1983 811 441, sales@neutrik.co.uk

## JAPAN

Neutrik Limited, Yusen-Higashinibashi-Ekimae Bldg., 3-7-19  
Higashinibashi, Chuo-ku, Tokyo 103  
T +81 3 3663 47 33, mail@neutrik.co.jp

## CHINA

Ningbo Neutrik Trading Co., Ltd., Shiqi Street,  
Yinxian Road West  
Fengjia Village, Hai Shu District, Ningbo, Zhejiang, 315153  
T +86 574 88250833, sales@neutrik.com.cn

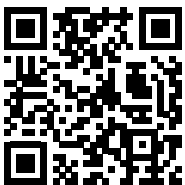
## HONG KONG

Neutrik Hong Kong LTD., Suite 18,  
7th Floor Shatin Galleria Fotan, Shatin  
T +852 2687 6055, sales@neutrik.com.hk

## ASSOCIATED COMPANIES

Contrik AG, Steinackerstrasse 35, 8902 Urdorf, Switzerland  
T +41 44 736 50 10, contrik@contrik.ch

H. Adam GmbH, Felix-Wankel-Straße 1, 85221 Dachau, Germany  
T +49 08131 28 08-0, anfrage@adam-gmbh.de



[www.neutrikgroup.com](http://www.neutrikgroup.com)

**Neutrik  
Group**