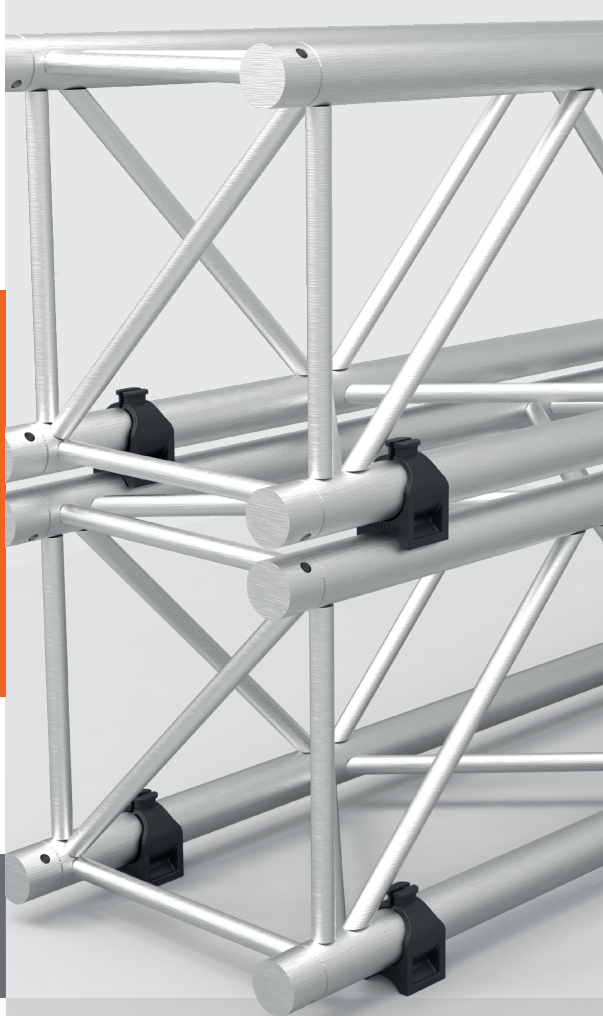




ADMIRAL
STAGING

Original user manual

THE BRICK



Manufacturer:

Rolight Theatertechniek B.V.

Josink Kolkweg 10

7545 PR Enschede , The Netherlands

Phone (+31)53 432 06 44

info@rolight.nl

www.rolight.nl

Distributed by ADMIRAL

VERSION 01
Februari 2024
SKU: WASRD48

www.admiralstaging.com

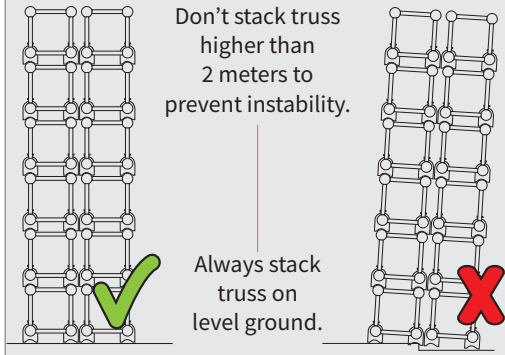
SCOPE

The intended use of the BRICK is to stack square truss with a diameter between 48 - 52 mm without needing separate truss carriers.

Any other way of use is considered to be a case of misuse. Solely the user is liable for any damage or injury resulting from such cases.

SAFETY INSTRUCTIONS

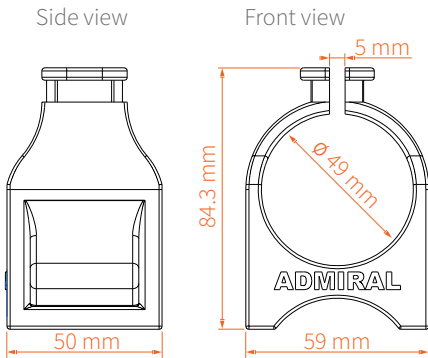
WARNING



Don't stack truss higher than 2 meters to prevent instability.

Always stack truss on level ground.

TECHNICAL DATA



Note

Fits truss with a diameter between 48 - 52 mm

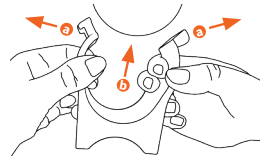
Technical data

Article code:	WASRD48
EAN:	8720094420196
Material:	rubber
Dimensions:	59 x 50 x 84.3 mm (L x W x H)
Weight:	0.1 kg
Colour:	black

ASSEMBLY INSTRUCTIONS

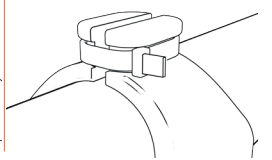
Step 1

Grip THE BRICK and spread the split end apart as you press the opened end of THE BRICK onto the truss chord.



Step 2

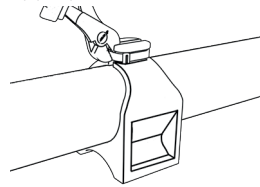
Place a cable tie around the split end of THE BRICK and tighten to secure THE BRICK in place.



DISASSEMBLY INSTRUCTIONS

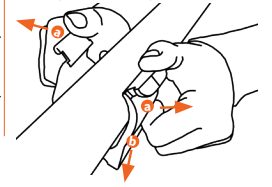
Step 1

Cut the cable tie in half and dispose of it in the appropriate bin.

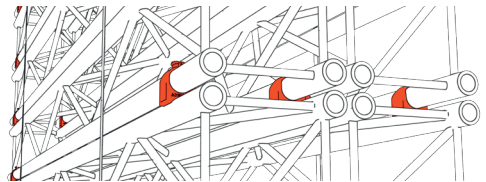


Step 2

Remove THE BRICK from the truss by spreading the split end apart.



USE



MAINTENANCE

SAFETY INSTRUCTIONS

THE BRICK hardly needs any maintenance under normal use and environmental circumstances. For safety reasons however, all parts must be checked regularly for dirt, damages, loss and corrosion.

- Check all components for damages like cracks, deformations, scratches and corrosion. Damaged and corroded parts shall be rejected and thrown away.
- In general, scratches > 10% of the wall thickness mean the product needs to be rejected from use.
- In general, deformations > 10% of a straight line from the outer surface mean the product needs to be rejected from use.

