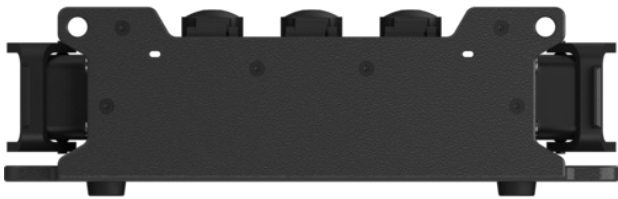


Power Strip Multicore CPSM-H2-T6

IN: 2 x Harting E16 – OUT: 6 x powerCON® TRUE1®
TOP

Power Strip Multicore are extremely rugged and compact distribution boxes which allow significant reduction of the cabling effort and cost due to the multicore inputs. It is ideally suited for outdoor usage and demanding mobile applications. 2 x Harting E16 In – 6 x powerCON® TRUE1® TOP Out



Features & Benefits

- **Reduction of cabling volume and effort** due to Harting E16 multipin Input / Daisy-chain.
- **High mechanical protection:** Rugged Easylen® housing with high IK, full connector protection with housing elements.
- **Xtreme Outdoor protection:** IP65 with Harting E16 in mated condition, sealing caps
- **Very compact design:** Height & Width only 96mm & 150mm due the stepped top plate.
- **Easy transport & handling:** stackable, lightweight, fully lockable. Options with the handle on the request.
- **Versatile mounting options:** mounting wholes for pegs and suspension, truss clamp

Markets & Applications

- Markets: Professional video wall / lighting / audio
- Mobile application: Festivals, live events
- Semi-permanent applications: Theaters, studios

Ordering information

| Article name | Details | Order code |
|--------------|---|------------|
| CPSM-H2-T6 | IN / Daisy chain: 2 x Harting E16, OUT: 6 x powerCON® TRUE1® TOP | 1037500 |

Technical Information

| Product | |
|-----------------------|---|
| Input device | 1 x Harting E 16 (6 channels) [1-9] |
| Output device | 6 x powerCON® TRUE1® TOP with self-closing caps |
| Daisy chaining | 1 x Harting E 16 (6 channels) [1-9] |

| Electrical | |
|--|---------------------|
| Contact resistance / protection class Dielectric strength | Protection class II |
| Dielectric strength | 0,5 kV / mm |
| Rated voltage | 250V AC |
| Rated Current | 16A |

| Mechanical | |
|--------------------------------|--|
| Dimensions | 150 x 95,25 x 330mm |
| Weight | |
| Conductor cross section | 2,5 mm ² |
| Mounting options | Truss clamp (M10), mounting wholes for pegging or suspension |
| Type of construction | Stackable |

| Material | |
|----------------|---------|
| Housing | Easylen |
| Color | black |

Environmental

| | |
|-----------------------------------|--|
| Flammability acc. to UL 94 | V-2 |
| Protection class | IP65 with Harting E16 in mated condition |
| Temperature range | -25 °C bis +40 °C |