



Patch Panels

Stage Box



NYS-SSR-8



NSB2A-20/4



NSB2B-12/4



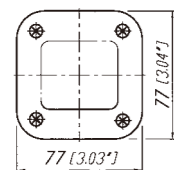
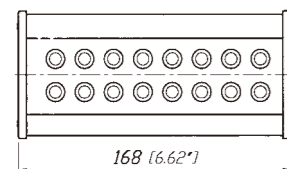
NSB1C-8/0

THE SMART WAY TO CONNECT

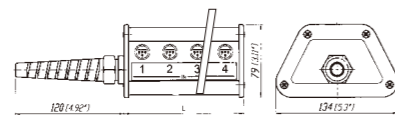
- Simple connection method for audio system
- 8 I/O 1/4" patch panels
- Rugged metal housing
- Convenient assembly, easy to use

- Special module system for size and space customization
- Personalized I/O connector combination, optional various length
- Convenient assembly
- 3 pole IDC XLR, no stripping or soldering required
- Does not contain self-adhesive channel digital label, need to be ordered separately
- Cost-effective

NYS SSR-8

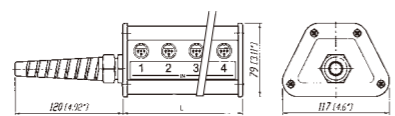


A型



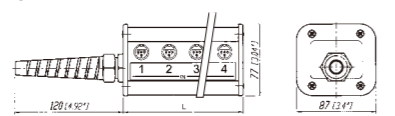
A	Length
NSB1A	132 (5.2')
NSB2A	252 (9.93')
NSB3A	372 (14.65')
NSB4A	491 (19.33')

B



B	Length
NSB1B	132 (5.2')
NSB2B	252 (9.93')
NSB3B	372 (14.65')

C



C	Length
NSB1C	132 (5.2')
NSB2C	252 (9.93')
NSB3C	372 (14.65')

Ordering Information

Article Name	Details
--------------	---------

Patch Panels

NYS-SSR-8	8 line in - 8 line out 1/4" patch panels
-----------	--

Stage Box - A

NSB1A-8/4	Length 1, 8 line in (female/output) - 4 line out (male/ input)
NSB2A-12/4	Length 2, 12 line in (female/output) - 4 line out (male/ input)
NSB2A-20/4	Length 2, 20 line in (female/output) - 4 line out (male/ input)
NSB3A-32/4	Length 3, 32 line in (female/output) - 4 line out (male/ input)
NSB4A-40/4	Length 4, 40 line in (female/output) - 4 line out (male/ input)
NSB4A-40/8	Length 4, 40 line in (female/output) - 8 line out (male/ input)

Stage Box - B

NSB1B-8/0	Length 1, 8 line in (female/output)
NSB2B-12/4	Length 2, 12 line in (female/output) - 4 line out (male/ input)
NSB2B-16/0	Length 2, 16 line in (female/output)
NSB3B-20/4	Length 3, 20 line in (female/output) - 4 line out (male/ input)

Stage Box - C

NSB1C-8/0	Length 1, 8 line in (female/output)
NSB2C-12/4	Length 2, 12 line in (female/output) - 4 line out (male/ input)
NSB3C-20/4	Length 3, 20 line in (female/output) - 4 line out (male/ input)

(Delivery of bulk products, including boxes, cover plates, brackets, cable joints and screws)

Specification Patch Panels Stage Box

Electrical

Rated current	depends on mating connector	2 A
Contact resistance	depends on mating connector	< 5 mΩ
Insulation resistance	>1 GΩ	>1 GΩ
Dielectric strength	500 V dc	500 V dc

Mechanical

Lifetime	> 1'000 mating cycles	> 1'000 mating cycles
Insertion / Withdrawal force	≤ 10 N / ≥ 10 N	≤ 10 N / ≥ 10 N
Cable O.D.	-	15 -20 mm
Wiresize	-	0.22 mm ² / 24 AWG or 0.14 mm ² / 26 AWG

Material

Housing	Al	Al
Square plate	-	POM
Cover	Thermoplastic	Thermoplastic
Contact	Brass / Bronze	Nickel plated
Temperature range	-25 °C to +70 °C	-25 °C to +70 °C