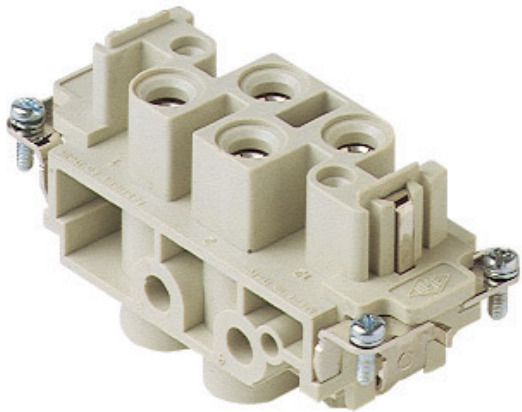


Part number
CXF 4/0



Brief description:

female insert, 4 poles + PE, screw terminal connections, 80A 690V, 8kV, 3, silver plated, size "77.27", CLASS insert series

Product description	
Model	female insert
Version	screw terminal connections
Series	CX
Product type	with female contacts
Family	CLASS inserts
Size	size "77.27"
N. of poles	4 poles + \oplus
Technical data	
Current	80 A (A.C. and D.C.)
Voltage	690 V
Rated impulse withstand voltage	8kV
Pollution degree	3
Wire cross-section	4,00 mm ² - 16,00 mm ²
AWG size	12 - 6
Operating temperature range (min, max)	-40°C ... +125°C
Contact type	silver plated
Mating cycles	≥ 500
IP degree of protection	IP20 without enclosure; IP65/IP66/IP67/IP68 with enclosure
Further technical details	
Characteristics according to EN 61984	80A 690V 8kV 3
Insulation resistance	≥ 10 GΩ
Rated voltage according to UL/CSA	600V
UL 94 flammability rating	V-0
Weight	124,00 g

Approvals / Standards	
Reference standard	EN 61984 (2001-11)
Quality mark	EAC
Conformity	CQC, CE
General ordering information	
EAN13 code	8015747042314
Tariff number	85369095
Country of origin	Made in EU (IT)
ETIM classification	EC000438
Packaging Information	
Packaging length	245,00 mm
Packaging height	165,00 mm
Packaging width	215,00 mm
Packaging weight	3,83 kg
Packaging volume	8,69 dm ³
Packaging description	Carton box
Packaging quantity	30 Pcs
Packaging EAN code	8015747191814
Sub-packaging weight	0,64 kg
Sub-packaging description	Carton
Sub-packaging quantity	5 Pcs
Sub-packaging EAN barcode	8015747042321

Part number

CXF 4/0



Notes
