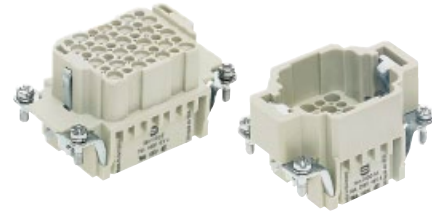


Number of contacts

24 +



Han
D/DD

Inserts

Identification	Series	Part number		Drawing	Dimensions in mm
		Male insert (M)	Female insert (F)		
<p>Crimp terminal</p> <p>Order crimp contacts separately (see Technical characteristics on page 02.06)</p>	Han DD®	09 16 024 3001	09 16 024 3101	<p>1) Distance for contact max. 21 mm</p> <p>Contact arrangement view from termination side</p> <p>Panel cut out for inserts for use without hoods/housings</p>	
<p>Coding pin</p>				09 33 000 9915	<p>Coding pin</p> <p>Use of the coding pin prevents incorrect mating to other connectors of the same type. The male pin should be omitted from the opposing cavity in the male insert.</p>