



## SOURCE FOUR ACCESSORIES

### EDLT

Enhanced Definition Lens Tube – Option for Source Four fixture body.  
Provides high contrast, crisp gobo projection imaging.



#### Applicable Product

#### Catalog #

#### Part #

Applicable Product	Catalog #	Part #
Source Four	419EDLT	7060A2046
Source Four	426EDLT	7060A2047
Source Four	436EDLT	7060A2048
Source Four	450EDLT	7060A2049

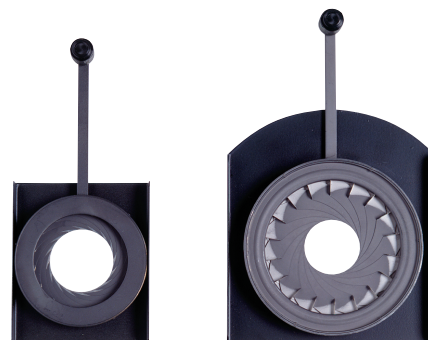
### DROP IN IRIS

#### Applicable Product

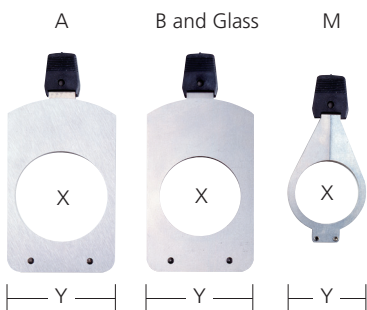
#### Catalog #

#### Part #

Applicable Product	Catalog #	Part #
5°-90° Source Four	400RS	7060A1012
Source Four jr	400JRS	7062A1011



### PATTERN HOLDERS



#### Applicable Product

#### Dimensions

#### Catalog #

#### Part #

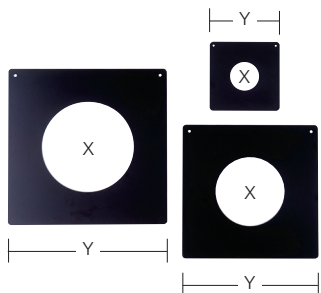
Applicable Product	Dimensions	Catalog #	Part #
A size for 5°-90° Source Four	X = 3.25" Y = 3.75"	400PH-A	7060A1013
B size for 5°-90° Source Four	X = 2.75" Y = 3.75"	400PH-B	7060A1014
Glass for 5°-90° Source Four	X = 2.75" Y = 3.75"	400PH-G	7060A1019
M size for Source Four jr	X = 2.12" Y = 2.75"	400JPH-M	7062A1010



# SOURCE FOUR ACCESSORIES

## DONUTS

Reduces flare in template projection.



### Applicable Product

### Dimensions

### Catalog #

### Part #

19°-50° Source Four & Source Four jr	X = 3.25"	Y = 6.25"	400DN	7060A1015
10° Source Four	X = 6"	Y = 12"	410DN	7060A1028
5° Source Four	X = 7"	Y = 14"	405DN	7060A1029

## TOP HATS

Reduces flare.

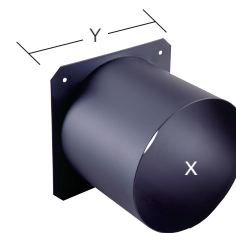
### Applicable Products

### Dimensions

### Catalog #

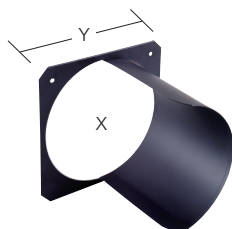
### Part #

19°-50° Source Four & Source Four jr	X = 5"	Y = 6.25"	5" tube	400TH	PSF1021
10° Source Four	X = 10"	Y = 12"		410TH	PSF1024
5° Source Four	X = 12"	Y = 14"		405TH	PSF1025
Source Four PAR	X = 6.75"	Y = 7.5"	3" tube	400PTH3	PSF1022
Source Four PAR	X = 6.75"	Y = 7.5"	6" tube	400PTH6	PSF1023



## HALF HATS

Like the Top Hat, but controls flare from one side only.



### Applicable Product

### Dimensions

### Catalog #

### Part #

19°-50° Source Four & Source Four jr	X = 5"	Y = 6.25"		400HH	PSF1026
Source Four PAR	X = 6.75"	Y = 7.5"		400PHH	PSF1027

## CROSS BAFFLE TOP HATS

Controls stray beams and light spills.

### Applicable Product

### Catalog #

### Part #

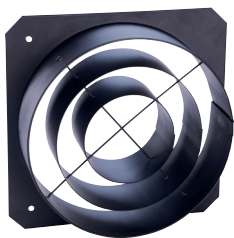
Source Four Par	400XBTH	PSF1031
-----------------	---------	---------





# SOURCE FOUR ACCESSORIES

## CONCENTRIC RING TOP HAT



### Applicable Product

### Catalog #

### Part #

Source Four Par

400CCTH

PSF1035

## CONICAL GEL EXTENDER

Best for maximum gel life. Requires 7.5" color frame.

### Applicable Products

### Dimensions

### Catalog #

### Part #

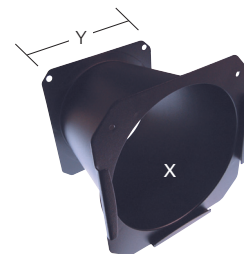
19°-50° Source Four

X = 5" - 6.75" Y = 6.25"

6" tube

750GE

7060A1048



## GEL EXTENDER

Places gel further away from fixture gel plane for better gel life.



### Applicable Products

### Dimensions

### Catalog #

### Part #

19°-50° Source Four & Source Four jr

X = 5"

Y = 6.25"

5" tube

400GE

PSF1020

Source Four PAR

X = 6.75"

Y = 7.5"

6" tube

400PGE6

PSF1029

Source Four PAR

X = 6.75"

Y = 7.5"

3" tube

400PGE3

PSF1030

## BARN DOOR

Large leaves and tube diameter optimize Source Four PAR light output.

### Applicable Product

### Dimensions

### Catalog #

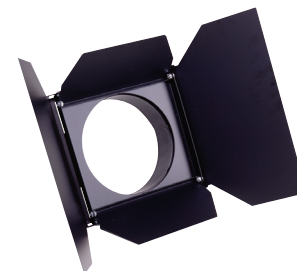
### Part #

Source Four PAR

6.75" Diameter

400BD

PSF1019





# SOURCE FOUR ACCESSORIES

## EGG CRATE LOUVER

Architectural accessory that provides 45° cutoff angles. Designed to eliminate the distracting glare often found in open faced fixtures.



Applicable Product	Dimensions		Catalog #	Part #
Source Four PAR	1/2" x 1/2" pattern	1/2" deep	400L	PSF1028

	Applicable Product	Catalog #	Part #
Weighted Base	Source Four PAR, 5 lbs.	400WB	PSF1032
Balance Yoke Assembly	Source Four Zoom	400BY	7060A2028
Canopy Mounting Kit	Source Four HID	400CK	7060K1002-0
C-clamp	All (not shipped with Source Four PAR)	400CC	7060A2009
Safety Cable	30" length	400SC	7060A1022

